

anats  
health products



## Product Catalogue

[www.anats.gr](http://www.anats.gr)

## COMPANY

ANATS was founded in Athens in 1982. It is an innovative company in the health sector with the main objective of importing, exporting, manufacturing and distributing medical, hospital, parapharmaceutical, medical technology products of high quality and advanced technology. It is based in privately owned facilities, facilities in Tavros, Attica. It cooperates with renowned logistics companies as well as transport companies for the proper storage and distribution of products.

## VISION

Its priority is the continuous improvement of the quality of human life! In order to best meet the needs of its customers, it provides a wide range of quality, reliability and absolute safety of innovative and innovative products and services. It manages to lead a central role in the Greek and international market, to grow and ensure a continuous upward trend in the Greek and international markets and successful course. In the context of the above, it has installed, implements and maintains a quality management system that fully complies with the

EN ISO 9001:2015 / EN ISO 9001:2015 European directives and standards.

13485:2016 / DY8/1348/04 by EKAPTY (since 1999)



## PRODUCTS

ANATS S.A. is the exclusive representative of well-established and certified products and brands from abroad. Indicatively we mention:

BIOCHEMICAL / NISSEI / RAYS / RADIANT / ROMED / I-HEALTH / BORSAM /

CORONATION and BIOHEM, BIOHEM, CORONES, CORONES and many more which fall into the following basic categories:

1. DIAGNOSTIC SUPPORT DEVICES / IN VITRO PRODUCTS
2. CONSUMABLE HEALTH AND MEDICAL DEVICES
3. BABY ECOLOGICAL AND DAILY CARE PRODUCTS
4. MEDICAL HOSPITAL EQUIPMENT
5. ORTHOPAEDICS & AIDS
6. FOOT AND HEALTH

ANATS SA manufactures products under its own brand name with the following logos:

"SAFETY A.T./G", "MAC-CHECK ANATS", "TERMO SAFETY", "TARGET", "ANATS Health Products"

## ACTIVITY

The categories of its clients are:

Public and Private Sector Nursing Institutions / Diagnostic Centres / Cooperatives Pharmacists' Cooperatives / Pharmaceutical Warehouses / Pharmaceutical Companies / Pharmaceutical Distributors / Pharmaceutical Distributors / Pharmacies / Pharmacies / Wholesale of professional cleaning and hygiene products / Pharmacies / Pharmacies / Shops Medical and Orthopaedic Supplies / Food Industries - Super Market / Shipping Companies / Cosmetic Stores / Specialized Cooperation Programs with i Health products. Through exclusive partnerships, it also serves major international markets.

## DISTINCTIONS - AWARDS

Indicatively mentioned are:

- The products it represents meet all safety standards and meet the
- The products covered by the company meet all the necessary European and international certifications.
- Since 2011, the company has been recognized by ICAP in the group of the "Strongest Strongest" Companies in Greece" based on the ICAP score which makes it one of the strongest companies in Greece secure companies in Greece. Only one out of ten companies participate in this group in Greece.
  - In 2009 ANATS S.A. was recognized with the award of the best agent in Europe by TRUPHATEK construction company.
  - In 2011 it was awarded by the construction company BIOCHEMICAL SYSTEMS as the most most innovative dealer for the use of wireless health technologies (iHealth projects).
  - In 2012 he supported the project of the "Philodassiki Union of Athens" with the aim of reforestation of bare land, the development of philodassian consciousness and the protection of the environment. protection of the natural environment.
  - In 2014 it was awarded as the fastest growing commercial agent of the NISSEI construction company.
  - It has received awards in the context of its corporate responsibility from several institutions with The latest award is that of Doctors of the World for its contribution to the efforts of organization's efforts in the field of migration in the fall of 2015.
  - In 2018-2019 she has supported the Panhellenic Association of Women with Breast Cancer "Alma Life" a non-profit association, founded in 1988 by women who had experienced personally experienced breast cancer, aiming for a world without deaths from cancer a world without breast cancer.
  - During the 2019-2022 Pandemic it has successfully participated as a key
  - During the pandemic, the company has been a key supplier of materials for SARS-Cov2 diagnosis and the vaccination programme of the relevant ministries. Has received in 2021 an honorary award for its participation in the development and clinical study of the Cardio Now ecosystem by the Hellenic Society Cardiovascular. In collaboration with the Demokritos Research Center and the European Commission for the Promotion of Resuscitation the support of a medical staff led by cardiologist Dr. Maniotis Christos.

2	DEFIBRILLATORS
3	DEFIBRILLATION ACCESSORIES
4	ULTRASOUND DEVICES (DOPPLER)
5-6	OXYMETERS
7	BORSAM - ECG
8-10	DIGITAL & SMART PORTABLE DEVICES
11-18	DIGITAL BLOOD PRESSURE MONITORS
19	MERCURY SPHYGMOMANOMETER
20	ANEROID SPHYGMOMANOMETERS
21-24	STETHOSCOPES
25-28	RESPIRATORY EXERCISERS, NEBULIZERS DISPOSABLES, SUCTION DEVICES & CONSUMABLES
29-31	SUCTION DEVICES & CONSUMABLES
32-34	DIAGNOSTIC DEVICES
35-37	DIABETIC SUPPLIES – PENINSULA NEEDLES
38-43	DIAGNOSTIC TESTS
44-49	SCALES
50	BATTERIES
51	HEATING PADS - UNDER BLANKETS
52-55	THERMOMETERS
56-57	PERSONAL HYGIENE ITEMS
58-63	PHARMACY ITEMS
64-68	MEDICAL GLOVES
69-70	SYRINGES - NEEDLES
71	I.V. CATHETERS
72	INFUSION SETS
73-74	UROLOGY
75-76	VARIUS PLASTICS
77	PAPER PRODUCTS & BAGS OF DEAD
78-83	PROTECTIVE PRODUCTS
86	ULTRASONIC GEL - LUBRICANTS - CREAMS
87	CONSUMABLES
88	GAUZES - BANDAGE
89	BANDAGE
90	SURGICAL INSTRUMENTS & ORTHOPEDIC & ORTHOPEDIC AIDS

With responsibility and respect for our fellow human beings and our partners, we offer innovative and reliable products and services. The trust that you have shown us for so many years commits us to continue to evolve and contribute dynamically to the upgrading of the quality of our cooperation.



# DEFIBRILLATORS

RADIAN AED (Heart Guardian) Automatic External Defibrillator: helps to restore normal heart function from acute heart diseases by performing an electrocardiogram and, if deemed necessary, an electric shock in case of sudden cardiac arrest.

RADIAN AED (Heart Guardian) Automatic External Defibrillator, provides accurate analysis of the patient's body conditions and defines the exact number of electric shocks the patient needs, providing safety and quick results.



## AED HR-701 AED HR-701 Plus

The Heart Guardian HR-701 Series Automatic External Defibrillator is an emergency medical device that helps restore normal heart function to people who have lost consciousness due to sudden cardiac arrest.

The HR-701 series automatically detects heart rhythm in cardiac arrest victims and delivers an electric shock to the heart to restore its normal rhythm.

The AED Plus Defibrillator with 4.3" LCD screen.



## Defi® 5s Adult / Child AED

The Defi 5s defibrillator is an automated external defibrillator. The AED storage software supports AED for receiving data sent via infrared.

The AED storage software supports reading and setting of cardiopulmonary resuscitation waves, AED language setting, reading, analysis, and storage data can be retrieved from the storage software.



# DEFIBRILLATORS



CODE: 496-05-002 (DEFICINER GREEK)  
CODE: 496-05-001 (DEFICTOR ENGLISH)

## Defibrillator HeartGuardian HR-501 RADIANT AED

Automatic Defibrillator RADIANT Model HR501 2 languages.  
Automatic self-check once a month  
Adult/child toggle button  
Energy 150J±10% (Adult) / 50J±10% (Child)  
Guidance process with LED lighting / Voice Commands  
Size: 223(WIDTH) x 312(LENGTH) x 85(HEIGHT)  
Weight with Battery: 2.2kg



CODE: 496-05-003

## Training Defibrillator Radian Aed HR-501T

Training Defibrillator Radian Aed HR-501T with Greek pronunciation.  
Ideal for training personnel in the process of rescue by defibrillation of the patient.



CODE: 496-05-006

## Defibrillator HeartGuardian HR-701 RADIANT AED

Automatic Defibrillator Radian Aed HR-701 4 languages.  
HEART GUARDIAN HR/701  
Automatic self-check once a month  
Adult/child toggle button  
Energy 150J-250J for an adult / 50J for a child  
Visual guidance with LED lights  
Size: 222 (length) x 280 (width) x 75 (height)  
Weight with battery: 2.3 kg (5lb)



CODE: 496-05-005

## Defibrillator HeartGuardian HR-701 Plus RADIANT AED

Automatic Defibrillator Radian Aed HR-701 4 languages.  
HEART GUARDIAN HR-701 PLUS  
Automatic self-check once a month  
Adult/child toggle button  
Guidance with Voice Commands  
Energy 150J-250J for an adult / 50J for a child  
4.3" LCD screen (HR-701 plus)  
Size: 222 (length) x 280 (width) x 75 (height)  
Weight with battery: 2.3 kg (5lb)



CODE: 632-05-002

## Defibrillator Defi® 5s

Automatic Defibrillator Defi® 5s 2 languages of choice  
Operation button for adults / children  
Daily, Weekly and Monthly Self-test Energy 150J - 200J for adult / 50J - 75J for child  
Size : 300 (length) x 240 (width) x 80 (height)  
Weight with battery: 1.9 kg (4.2 lb)



# DEFIBRILLATORS ACCESSORIES

## Battery AED HR -501

Model :BT-303  
Use: Battery to supply power to the defibrillator  
Type : LiMnO<sub>2</sub> (DC 12V 4.2A)  
Size : 60(H) x 175(W) x 25(D)mm  
Weight : 285g  
Lifetime : 4 years



CODE: 496-02-001

## AED Battery HR -701 & 701Plus

Type: Lithium Manganese Dioxide LiMnO<sub>2</sub> (12V DC 6A), non-rechargeable  
Baros: 285g  
Battery life: 4 years



CODE: 496-02-007/005(PLUS)

## Battery AED Defi 5 s

Type: 12V, 2800 mAh Li -MnO<sub>2</sub> Cell (Non-rechargeable)  
Battery life: 4 year



KΩΔ: 632-02-002

## Electrode for AED Defi 5 s defibrillator

Type:Gel-coated inserts from their manufacture / self-adhesive / non-polarized defibrillation pads / also suitable for adults / non-sterile  
Shelf life: 2 year



CODE: 632-02-003 (ADULTS)  
CODE: 632-05-004 (CHILDREN'S)

## Electrode Defibrillator AED HR -701 & 701 Plus

Type: Pads that have gel in their construction / self-adhesive / non-polarized defibrillation pads / suitable for both children and adults / non-sterile  
Lifetime: 2 years from date of manufacture  
Size and length: 110X120mm /1.8m  
Case Size: 170x250mm



CODE: 496-02-006/004 (PLUS)

## AED HR501 Defibrillator Electrode

Model : P-303  
Usage ? Performs electrical body on the patient, Detects the patient's heart rate  
Type : Adhesive pads for adult/child  
Size : 145(H) x 98(W)  
Weight : 120g  
Lifetime : 2 years



CODE: 496-02-002



CODE: 496-02-009



CODE: 613-02-001



CODE: 613-02-002



CODE: 613-02-003

### RADIAN AED HR501 AED wall bracket

Radian Aed HeartGuardian defibrillator wall bracket. With retaining straps, for supporting and mounting the defibrillator on a wall. Suitable for Ships, public places and buildings, so that the defibrillator can be placed in a prominent place for its timely use in case of emergency.

### Security box ARKY outdoor defibrillator with alarm

Outdoor defibrillator box  
Made of highly durable polystyrene. Features an alarm, which is automatically activated when the door is opened. Powered by a low cost battery. 100% waterproof and dustproof. Suitable for all automatic external defibrillators.  
Dimensions: 40x34x20 cm  
Available in green colour

### ARKY 60121 Indoor AED box without alarm

ARKY metal indoor defibrillator box without alarm. It is the ideal solution for offices, public services, gyms, swimming pools, etc. It is incredibly durable and its paint is electrostatic remaining unchanged in time.  
Its dimensions are 38 x 38 x 20 cm  
Available in green.

### AED indoor box ARKY round

ARKY indoor defibrillator box round.  
It is the ideal solution for offices, public services, gyms, swimming pools, etc. It is incredibly durable and its paint is electrostatic, remaining unchanged in time.  
Its dimensions are Dimensions:  
Length: 48 cm,  
Height: 48 cm.,  
Depth: 18 cm.  
Available in green.



# ULTRASOUND DEVICES (DOPPLER)

## Doppler ES102 EX 2MHz Fetal (Fetal Doppler)

Desktop device for uterine ultrasound, Hadeco Japan, power/rechargeable battery with speaker and heart rate display, volume indicator and battery capacity indicator, heart rate freeze button for annotation and 2.25MHz head. The Hadeco EchoSounder ES-102EX is an embryonic Doppler. It features a large, easy to read and display fetal heart rate and a built-in speaker for optimal sounds. The EchoSounder is used to monitor fetal heart rate in the doctor's office and hospital during the second and third trimester of pregnancy.

- Fetal Doppler with LCD display
- Monitor fetal heart rate in the doctor's office
- Large built-in speaker for optimal fetal heart sounds
- With battery function

Head: 2.25 MHz

Focused 20 mm dia. distributor

Ultrasonic power: 2.14 mW/cm<sup>2</sup> (Ispta, on-site)

Power source : 6V Ni-Cad battery, rechargeable at 100 -120 or 220 240V, 50/60 Hz

Full charge time: 10 hours

Full charge usage time: 5 hours (maximum volume)

Auto power off: If no signal: 3 minutes.

3.5 megaphone output:250 mW or more

Heart rate range:60 to 240 bpm, accuracy: 3%

Frequency characteristics:230 ± 50 to 800 ± 150 Hz

LCD Display:Heart rate, sound level and battery level.



CODE: 012-05-011

## Doppler Smart 45PROBE 2MHz Fetal

Hand-held bi-directional DOPPLER with LCD display & EXTRACTOR

Hadeco Bidirectional Doppler with waveform display and printer. Provides bidirectional velocity waveforms & numerical data. Fetal heart rates and fetal heart rate and monitoring waveforms when used with a probe

2MHz. Hadeco SMART MICROPROCESSOR DESIGN Fully automatic gain control & baseline adjustment. There are various operating settings available with the LCD menu and unique scroll button. Memory storage 30 waveforms. USB INTERPACE COMPUTER Optional communication cable and software is provided

Smart-V-Link™. Stores waveforms & numerical data on the computer for data analysis and archiving.



CODE: 012-05-023

## Vascular Doppler Echo Sounder ES-101EX (Fetal)

Doppler in mobile phone with built-in speaker and transducer.

- Large LCD display for fetal heart rate.

- 2 AA alkaline batteries

SPECIFICATIONS

Head 8,2 MHz

Power source DC 3V, AA alkaline batteries (1.5Vx2) pieces

Battery life 5 hours or more when sound is at maximum Auto shut-off

No signal in 3 minutes

Maximum speaker volume Approximately 250mW

Heart rate 30 to 240 beats, accuracy 3%

Speed From 0 to 99 cm/s, accuracy ±15%

LCD display

Waveform movement, speed (maximum and minimum) heartbeats (bpm).

Volume, low heartbeat indication.

External performance

Headphones (3.5m)

Environmental conditions 10-40 degrees 10-40 degrees 85% humidity or less without condensation

Storage and transportation From 0-50 degrees 85% humidity or less without condensation

Dimensions 45(W) x 139(D)x30(H) mm

Weight: Approximately 150 grams including batteries

150-150 KG (INCLUDING BATTERIES)

Maximum and minimum blood flow determination

150 ml/minimum and minimum blood flow

Maximum and minimum blood pressure measurements

Measurement of blood pressure and blood flow measurements



CODE: 012-05-018

# OXYMETERS



## BLOOD OXYGEN SATURATION MONITORING

Pulse oximeters are devices designed to be placed on a finger to obtain in a few seconds the blood oxygen saturation level (SpO<sub>2</sub>), expressed as a percentage. Values above 95% should be considered natural, and therefore generally good, while the lower they are below this threshold the more critical they are (an insufficiently oxygenated blood does not properly nourish the body's tissues and organs).

SpO<sub>2</sub> is an important parameter for the prevention of critical conditions affecting internal tissues and organ function, providing important information to the physician about the possible presence of serious pathologies such as: Heart failure, arterial stenosis, ARDS (acute respiratory distress syndrome), COPD (chronic obstructive pulmonary disease), pulmonary emphysema, congenital heart defects, cystic fibrosis, critical conditions caused by drugs (allergy or overdose).

In addition, the use of a pulse oximeter can be vital for monitoring extreme activities such as high altitude climbing or diving to avoid dangerous situations.



CODE: 632-05-001

## Finger pulse oximeter

Digital Pulse Oximeter Meditech Oxyo Pro, with color Oled Display, carrying case, automatic switch off, pulse histogram, adjustment alarm setting, for measuring oxygen saturation and heart rate.

### Technical Features

Small size and easy to carry.

Color OLED display with 4 different display modes.

Pulse histogram SpO<sub>2</sub> with Dual LED wavelength Parameters.

Oxygen saturation range: 0 - 99%.

Measurement accuracy: for oxygen saturation between 70%-99%, the accuracy is  $\pm 2\%$ .

Heart rate measurement: 25 - 240 beats/min, with an accuracy of  $\pm 2\%$ .

Easy to use with high accuracy.

Automatic shutdown after 20 seconds without signal

Works with standard AAA batteries and the continuous working time is 30 hours



CODE: 374-05-005

## Oximeter Wireless iHealth Air Po3 Bluetooth

iHealth Air Wireless pulse oximeter PO3m. Compatible with iPhone, iPad and Android smartphones

### Specifications

Measures and display instantly on your device and smartphone:

SpO<sub>2</sub>: Blood oxygen concentration

Pulse: Number of heartbeats per minute

PI: Refractive index (pulse) displayed in the iHealth MyVitals app Tracks data, graphs and history in the iHealth MyVitals app

Bluetooth 4.0 wireless sync

Share your medical data with your healthcare professional or family

Micro USB charging

Secure and free data storage

Monitor oxygen saturation, diffusion index and pulse with

iPhone, iPad and Android smartphones

For iOS and Android version 4.0+



## Fingertip pulse oximeter (Bluetooth)

Fingertip pulse oximeter(Bluetooth)  
 Product Feature  
 Potable and Convenient  
 One-touch operation  
 Lower consumption  
 Low voltage reminder  
 Bluetooth BLE  
 Free charge APP (OxyCare- BerryMed)  
 Support communication protocol  
 CE0123 FDA 510 ANVISA S013485 INMETRO



CODE: 024-05-007

## Pulse oximeter Nonin 8500

The Nonin 8500 palm pulse oximeter provides an easy and accurate way to assess blood oxygen saturation and heart rate from adults to neonates. Truly portable and with long autonomy, the Nonin 8500 palm oximeter meets the most demanding requirements at a very low cost. With 100 hours of battery life, the Nonin 8500 provides a cost-effective, environmentally friendly solution for your monitoring needs. The pulse oximeter Nonin 8500 palm pulse oximeter features LED lights for displaying pulse rate and blood oxygen saturation and 3 function keys for easy operation of the device. It also has reliable construction, with proven technology and accuracy in pulse oximetry from Nonin Medical. The Nonin 8500 palm pulse oximeter is energy efficient with 100 hours of battery autonomy, versatile with numerous connectivity options and features compatibility with the entire Nonin Pure Light® sensor range. In addition, it features a pulse power indicator with a tricolor perfusion indicator for instant monitoring. It has great accuracy you can trust in the most challenging conditions such as motion or low perfusion and rugged construction making the oximeter functional in the most demanding environments (USAF air ambulance certified).



CODE: 419-05-004

## Table oximeter Nonin 7500-0103

The Nonin 7500 model is designed with a unique low profile that can be easily mounted on a table or in its own carrying case. The simple functionality of the Nonin 7500 handheld, with a minimum battery autonomy of 16 hours, 4-hour fast recharge, and 70 hours of memory, makes it suitable for a variety of clinical and home care applications. Like all Nonin portable oximeters, the Nonin 7500 provides a wide variety of reliable measurements with on-screen readings.



CODE: 419-05-003

## Remote real-time patient monitoring with a cardiograph

The transmission of information on cardiac electrical activity through a portable, very small device.

### Cardionow

It is an ecosystem consisting of a credit card-sized cardiograph and a recognized software, which transmits the user's cardiogram (ECG) in near real time with additional useful information.

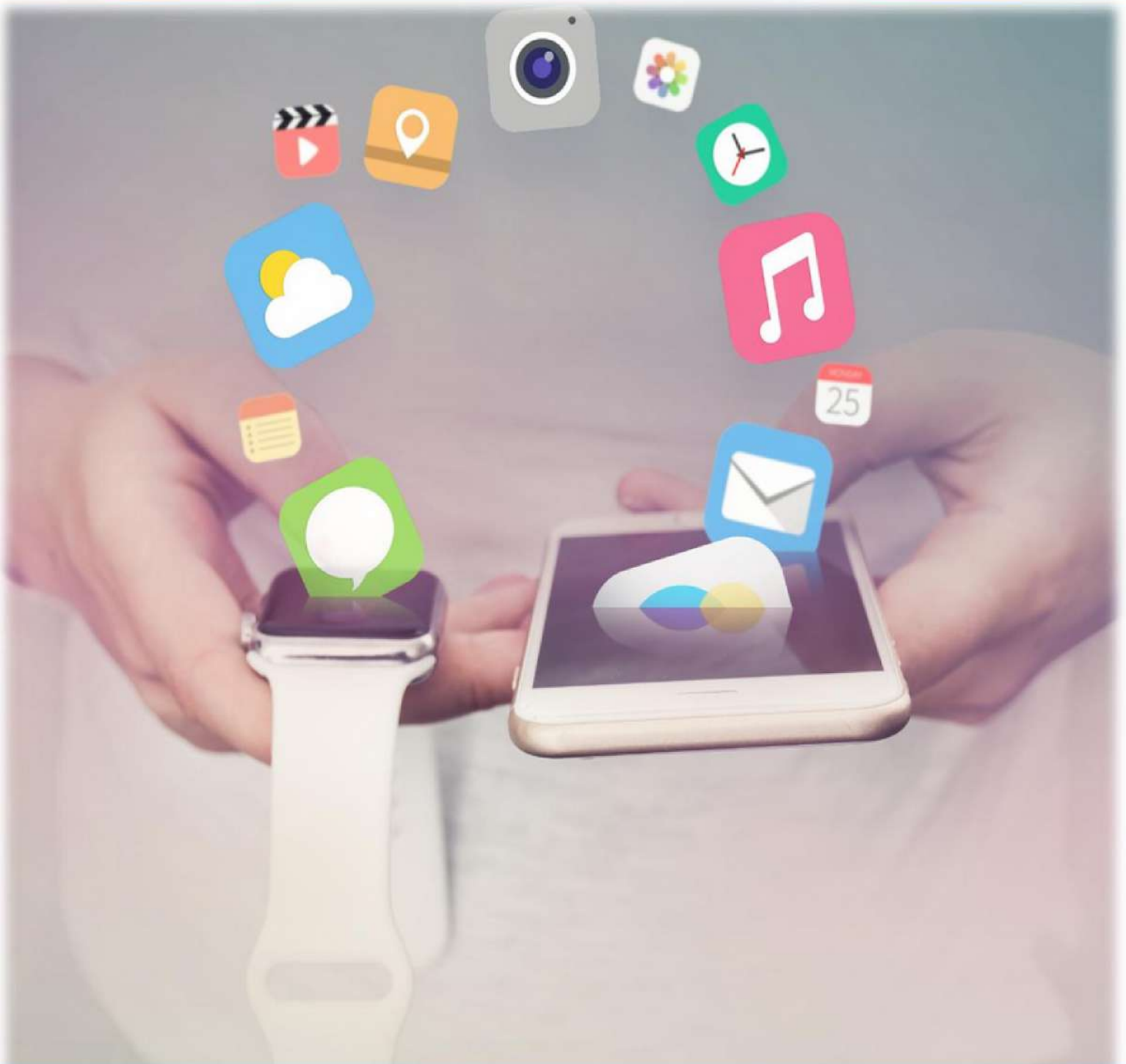


Its weight is very light. It protects your health at all times.





# DIGITAL & SMART PORTABLE DEVICES



**Smartbands are also called activity trackers, "smart" and digital bracelets, which are primarily used to monitor the biometric activity of the person wearing them.**

What does this mean? That their wearers can record their sporting activity, as well as the duration and quality of their sleep. The data is "transferred" and displayed on the user's smartphone where a special application (app) is installed. In the app various data is displayed and depending on the manufacturer, there is even information, advice and other interesting data aimed at improving the health status of the smartband user. The price range of smartbands is quite extended and depends on the capabilities and characteristics of each device.

Smartbands are relatively simple in their appearance and design and are the most affordable wearables available. The target audience is not only those who are involved in sports or just running and exercising to improve their fitness. They are also people who are simply trying to maintain their health at the best possible level and smartbands are the perfect solution for that.

# DIGITAL SMARTWATCHES



CODE: 648-25-015



CODE: 648-25-016



CODE: 648-25-017

## Smartwatch N8 Ultra

### Technical Characteristics

The new Wearfit Pro N8 Ultra smartwatch supports Bluetooth calling, has a square design and modern design with a large 49mm IPS touch screen 49mm curved with 2.5D glass and is equipped with many features such as heart rate monitor, SPO2 blood oxygen monitor, Thermometer, Multisport functions

N8 Ultra device

Shape Square

Dimension 49\*41\*13 mm

Weight 50 grams

Colors Silver, Black, Gold

Display IPS

Screen size 2.02 inches

Screen resolution 385\*385 pixels

Compatible Os Android & IOS

Sensors

- Heart Rate Sensor

- G Sensor

Bluetooth V5.0

GPS NO

Speaker Yes

Microphone Yes

Multi-sport function Yes

Heart rate monitoring Yes

Blood oxygen monitor Yes

Blood pressure monitor Yes

Additional features

- Bluetooth call

- Thermometer

- Seated reminder

- Sleep monitoring

- Alarm clock

- Barometer

- Brightness adjustment... etc

Battery capacity 380 mAh

Normal use 2-5 days (battery life varies depending on usage, volume of calls and reminders and Social Media notifications.)

## Smartwatch N8 Max

### Technical Characteristics

Device N8 Max

Shape Rectangular

Dimension 42,7\*36,4\*12,8 mm

Weight 50g

Colors Black, Pink-Gold

Display IPS

Screen size 1.99 inches

Screen resolution 385\*385 pixels

Compatible Os Android & IOS

Sensors - Heart Rate Sensor

- G Sensor

Bluetooth V5.2

GPS NO

Speaker Yes

Microphone Yes

Multi-sport function Yes

Heart rate monitoring Yes

Blood oxygen monitor Yes

Blood pressure monitor Yes

Smartwatch Color : Black Silicone Strap : Black

Additional features

- NFC access control

- Bluetooth calling

- Seated reminder

- Sleep monitoring

- Alarm clock

- Barometer

- Brightness adjustment... etc.

Battery capacity 380 mAh

Normal use 2-5 days

Application name WearFit Pro

Silicone strap

NFC Only for Smart Locks ( no interface with bank cards)

Charging Wireless Charging



CODE: 648-25-018



CODE: 648-25-019



### Oscilloscope Digital HR-40 Nissei

HR 40 NISSEI Digital Oscilloscope from Japan. Fitting on the finger and not belted to the chest Recording calories consumed (men/women)  
Possibility to connect to a computer for data transfer



CODE: 028-01-031

### Digital Watch InovalleyEchomaster

#### Technical Characteristics

Time, 2 alarms

1/100 S chronograph

Memory of 10 measurements

Countdown timer.



CODE: 014-14-027

### Emergency telephone SpareOne

SpareOne is an emergency/emergency phone, a backup phone. The Energizer Ultimate Lithium L91 battery - included in the package lasts 15 years!



CODE: 335-25-001

# DIGITAL BLOOD PRESSURE MONITORS



## BLOOD PRESSURE MONITOR

Blood pressure is the term used to describe the force with which blood presses against the sides of the blood vessels, arteries as it circulates around the body.

High blood pressure (hypertension) can strain the arteries and organs, which can increase the risk of serious problems such as heart attacks and strokes. Low blood pressure (hypotension) is not usually as serious, although it can cause dizziness and fainting in some people. Monitoring blood pressure is the only way to tell if your blood pressure is too high or too low, because most people will have no obvious symptoms of hypertension.

## DIFFERENT SOLUTIONS FOR EVERY NEED

A variety of blood pressure monitoring devices are available, so that blood pressure can be measured as much as possible. One's preference is for the type of wrist or arm blood pressure monitor.

### Arm blood pressure monitor

Classic design meets cutting-edge technology. Thanks to the applied technology, measurements are fast and reliable.

### Wrist blood pressure monitor

Small in size, but accurate. Quick and easy to use and very convenient for everyday use, wherever you are.





## Digital Arm Blood Pressure Monitor Nissei DSK-1011



### Additional Accessories

**1.5V BATTERIES**  
4 x Alkaline AA size  
**CUFF SIZE**  
Size: 22 - 32 cm, with soft cuff

CODE: 028-01-102



### Innovative technology

Measurements are faster and gentler: blood pressure blood pressure is monitored during the gradual inflation of the cuff.



### Irregular heartbeat detection

Detects irregular pulses, an indicator of cardiac arrhythmias.



### Body sensor

It detects body movements or interference that may be that may cause measurement errors.



### Dual memory, dual user

Stores up to 60 results in each memory bank.



Size: 22 - 32 cm. Smooth finish, wrapping gently around around the arm.



### Switchable power supply

Can be used with an AC adapter (not included) or AA alkaline batteries.



### Personal mode

The cuff inflation is adjusted according to the last 3 readings, to shorten the measurement time and improve the comfort.



### Indication of circulatory risk

Displays the pulse pressure, a parameter related to the pulse pressure of the stiffness of the artery and the risk factors of circulatory risk.



### ESH Clinically Certified

Technology in compliance with the IP2010 protocol of the European Hypertension Society.



### WHO Classification

Values of blood pressure are classified according to the guidelines of the World Health Organization.



### Additional Accessories

**1.5V BATTERIES**  
4 x Alkaline AA size  
**CUFF SIZE**  
Size: 22 - 42 cm

CODE: 028-01-100

## Digital Arm Blood Pressure Monitor Nissei DS-B23-04 Delicare



### Additional Accessories

**CARRY BAG**  
For safe storage and transport  
**1.5V BATTERIES**  
4 x Alkaline AA size  
**CUFF SIZE**  
Size: 22 - 42 cm, with soft soft cuff

CODE: 028-01-200



### Innovative technology

Measurements are faster and more gentle: blood pressure is monitored during the gradual inflation of the cuff.



### Irregular heartbeat detection

Detects irregular pulse, indicator of cardiac arrhythmias.



### Body sensor

Detects body movements or interference that may cause measurement errors.



### Wide range of comfortable cuff

The device checks and warns if the cuff is not worn correctly.  
Size: 22 - 42 cm. Soft finish



### Switchable power supply

Can be used with an AC adapter (not included) or AA alkaline batteries.



### ESH Clinically Certified

Technology in compliance with the IP2010 protocol of the European Society Hypertension.



### Extended warranty

The product has a 5-year warranty.

## Digital Arm Blood Pressure Monitor Nissei DSK-1031



### Automatic Operation

The oscilloscope (AUTO) or listening mode can be set by the user.



### Irregular heartbeat detection

The inflation and deflation speed can be easily adjusted and the maximum inflation and deflation speed can be cuff constriction is adjusted according to the patient's parameters



### Body sensor

Detects body movements or interference that may cause measurement errors



### Dual memory, dual user

Stores up to 60 results in each memory bank



### Smart rigid cuff

The device checks and warns if the cuff is not worn correctly. Size: 22 - 42 cm. Soft finish



### Switchable power supply

Can be operated with AC adapter or internal rechargeable batteries NiMH, both included.



### Indication of circulatory risk

Displays the pulse pressure, a parameter related to the stiffness of the artery and circulatory risk factors.



### WHO Classification

Values of blood pressure are classified according to the guidelines of the World Health Organization.



### ESH Clinically Certified

Technology in compliance with the IP2010 protocol of the European Hypertension Society.

## Digital Arm Blood Pressure Monitor DS-11 Nissei



### Additional Accessories

#### TRANSPORT TENTS

For safe storage and transport

#### 1.5V BATTERIES

4 x AA size Alkaline

#### HANDSET SIZE

Size: 22 - 42 cm

CODE: 028-01-104



#### Innovative technology

Easy to use and quick to measure, it guarantees complete reliability, accuracy and convenience thanks to its innovative technical solutions.



#### Irregular heartbeat detection

Detects irregular pulse, indicator of cardiac arrhythmias.



#### Αισθητήρας σώματος

It detects body movements or interference that may be that may cause measurement errors.



#### Arm circumference 22-42cm.

Soft finish that wraps gently around the arm.



#### Average Measurements

Displays the average of the last three readings.



#### Switchable power supply

Can be used with an AC adapter (not included) or AA alkaline batteries.



#### ESH Clinically Certified

In compliance with the European Society of Hypertension Protocol IP2010.

## Wireless Blood Pressure Monitor iHealth Clear BPM1



CODE: 374-01-005



#### Irregular heartbeat detection

Detects irregular pulse, cardiac arrhythmia indicator



#### Measurement at the touch of a button

With iHealth Clear, you will be able to conveniently transfer your measurements anywhere and store the measurements on your smartphone via WiFi.



#### Arm circumference 22-42cm.

Soft finish that wraps gently around the arm.



#### Comparison of results

1000 storage memories



#### ESH Clinically Certified

In compliance with the European Society of Hypertension Protocol IP2010.

## Wireless Blood Pressure Monitor iHealth Track KN 550BT



CODE: 374-01-003

### Additional Accessories

#### User Guide

#### 1.5V BATTERIES

4 x AA size Alkaline

#### HANDSET SIZE

Size: 22 - 42 cm



#### Irregular heartbeat detection

Detects irregular pulse, cardiac arrhythmia indicator



#### Measurement at the touch of a button

With iHealth Clear, you will be able to conveniently carry your readings anywhere and save the readings on your smartphone via WiFi, iHealthTrack changes the colour of the screen (green, orange, red) depending on your results.



#### Check your blood pressure level with the JNC system



#### Arm circumference 22-42cm.

Soft finish that wraps gently around the arm.



#### ESH Clinically Certified

In compliance with the European Society of Hypertension Protocol IP2010.



## Digital Wrist Blood Pressure Monitor Nissei Motion WS-C2-04



**Additional Accessories**  
**CARRYING CASE**  
 For safe storage and transport.  
**1.5V BATTERIES**  
 2x Alkaline AAA size.

CODE: 028-01-201



### High resolution system

A new measurement method, which scans the pulse wave six times more frequently than conventional blood pressure monitors.



### Innovative measurement technology during inflation

Easy to use and quick to measure, it guarantees complete reliability, accuracy and convenience thanks to its innovative technical solutions.



### Body sensor

It detects body movements or interference that may be that may cause measurement errors.



### M-Shaped cuff

Improves measurement accuracy by binding the two bones of the wrist securely, so that the arterial blood vessels can be blood vessels are firmly clamped during inflation.



### Irregular heartbeat detection

Detects irregular pulses, heart rate index, heart rate indicator arrhythmias.



### Status function

Checks the correct position of the cuff before measuring.



### Dual memory, dual user

Stores up to 60 results in each memory bank.



### Easy Transportation

Compact and easily transportable thanks to the rigid and protective case.



### WHO Classification

Values of blood pressure are classified according to World Health Organization guidelines.

## Digital Wrist Blood Pressure Monitor Nissei WSK-1011



**Additional Accessories**  
**CARRYING CASE**  
 For safe storage and transport  
**1.5V BATTERIES**  
 2x Alkaline AAA size.

CODE: 028-01-101



### M-Shaped cuff

The proprietary, patented technology "M-cuff"®, captures the two arteries in the wrist securely and outputs pulse wave signals to give accurate measurements with an accuracy equal to upper arm monitors.



### Easy Reading

Display with large digits. Touch switch operation.



### Body sensor

It detects body movements or interference that may be that may cause measurement errors.



### Irregular heartbeat detection

Detects irregular pulse, indicator of cardiac arrhythmias.



### Circulatory risk index

Displays the pulse pressure, a parameter related to the pulse pressure of the stiffness of the artery and the risk factors of circulatory risk.



### Dual memory, dual user

Stores up to 60 results in each memory bank.



### ESH Clinically Certified

In compliance with the IP2010 protocol of the European Hypertension Society.



### WHO Classification

Values of blood pressure are classified according to World Health Organization guidelines.

## Digital Wrist Wireless iHealth View BP7s Bluetooth



CODE: 374-01-006



Medical Product



Securing and protecting your personal data



Internal memory with or without the use of your smartphone



Display with Led backlight



Automatic data transfer (synchronisation) via Bluetooth or WIFI.



Detection of arrhythmias

## Digital Wrist Wireless iHealth BP7 Sense Bluetooth



CODE: 374-01-002



The measurements are displayed immediately after each measurement



Check your blood pressure level based on the JNC system



Digital notebook



Real-Time measurement results



Ability to export data to CSV, XLS, PDF files

## TECHNICAL DATA B. P. MONITOR



Digital Arm Blood Pressure Monitor Nissei DSK-1011	Digital Arm Blood Pressure Monitor Nissei DS-B23-04 Delicare	Digital Arm Blood Pressure Monitor Nissei DSK-1031	Digital Arm Blood Pressure Monitor DS-11 Nissei	Wireless Blood Pressure Monitor iHealth Clear BPM1	Wireless Blood Pressure Monitor iHealth Track KN 550BT
--	--	--	---	--	--

TYPE	ARM	ARM	ARM	ARM	ARM	ARM
SIZE	11,5x11,5x6,59cm	17x11x7cm	11,5x11,5x6,59cm	11,5x11,5x6,59cm	119mmx118mmx51mm	98 mmx98mmx46 mm
WEIGHT	250 g	250 g	250 g	250 g	350 g	438g
MEASUREMENT TECHNOLOGY	Osilometric method	Inflation Measurement	Fuzzy Logic	Inflation Measurement	Oscillating with automatic inflation / deflation	Pulse method using inflation and automatic measurement
SYSTOLIC PRESSURE RANGE	50-250 mmHg	50-250 mmHg	50-250 mmHg	50-250 mmHg	60-260mmHg	60-260mmHg
DIASTOLIC PRESSURE RANGE	40-180 mmHg	40-180 mmHg	40-180 mmHg	40-180 mmHg	40-199mmHg	40-199mmHg
PRESSURE ACCURACY	±3 mmHg	±3 mmHg	±3 mmHg	±3 mmHg	±3 mmHg	±3 mmHg
PULSE MEASUREMENT RANGE	40-160 pulses/min	40-180 pulses/min	40-160 pulses/min	40-180 pulses/min	40-180 pulses/min	40-180 pulses/min
PULSE ACCURACY	±5%	±5%	±5%	±5%	±5%	±5%
AUTOMATIC CLOSURE	2 MINUTES	2 MINUTES	3 MINUTES	3 MINUTES	3 MINUTES	3 MINUTES
LCD SIZE	92 x 92 mm	51 x 50 mm	92 x 92 mm	49 x 38 mm	√	√
MEMORIES	120 (2 SEATS)	60 (1 PLACE)	120 (2 SEATS)	120 (2 SEATS)	1000(2 SEATS)	99 (SEATS)
HANGER SIZE	22 – 32 cm	22 – 42 cm	22 – 42 cm	22 – 42 cm	13,5cm-22cm	22 – 42 cm
BATTERIES	4x 1,5V AA	4x 1,5V AA	4x 1,5V AA	4x 1,5V AA	Li-ion 2200mAh 1 * 3.7V	4x1.5V AAA
PERSONAL USE	√	—	—	—	√	√
AVERAGE MEASUREMENTS	—	—	—	√	√	√
PULSE PRESSURE INDICATION	√	—	√	—	√	√
MOTION DETECTION	√	√	√	√	√	√
PULSE INDICATION	√	√	√	√	√	√
DAY/YEAR + TIME	√	√	√	√	√	√
ESH CERTIFICATION	√	√	√	√	√	√
CARRYING CASE	√	√	√	√	√	√
WARRANTY	5 YEARS	5 YEARS	5 YEARS	5 YEARS	5 YEARS	5 YEARS

\*Spare parts are provided



## TECHNICAL DATA B. P. MONITOR



<b>Digital Wrist Blood Pressure Monitor Nissei Motion WS-C2-04</b>	<b>Digital Wrist Blood Pressure Monitor Nissei WSK-1011</b>	<b>Digital Wrist Wireless iHealth View BP7s Bluetooth</b>	<b>Digital Wrist Wireless iHealth BP7 Sense Bluetooth</b>
--	---	---	---

TYPE	WRIST	WRIST	WRIST	WRIST
SIZE	6,4 x 8,8 x 2,6 cm	7 x 7x 2,7 cm	72 x 74 x 17,6 mm	72mm x 74mm x 17,6mm
WEIGHT	100 g	110 g	120g	105g
MEASUREMENT TECHNOLOGY	Inflation Measurement	Fuzzy Logic	Oscillometric method using automatic inflation measurement	Automatic swell measurement
SYSTOLIC PRESSURE RANGE	50-250 mmHg	50-250 mmHg	60-260mmHg	0-300 mm Hg
DIASTOLIC PRESSURE RANGE	40-180 mmHg	40-140 mmHg	40-199mmHg	40-199mmHg
PRESSURE ACCURACY	±3 mmHg	±3 mmHg	±3 mmHg	±3 mmHg
PULSE MEASUREMENT RANGE	30-199 pulses/min	40-160 pulses/min	40-180 pulses / min	40-180 pulses/min
PULSE ACCURACY	±5%	±5%	±5%	±5%
AUTOMATIC CLOSURE	3 MINUTES	3 MINUTES	3 MINUTES	3 MINUTES
LCD SIZE	50x30mm	51 x 51 mm	44 x 26 mm	44 x 26 mm
MEMORIES	120 (2 SEATS)	120 (2 SEATS)	120 (2 SEATS)	120 (2 SEATS)
HANGER SIZE	12,5–22,5 cm	12,5–22,5 cm	13,5cm-22cm	13.5cm - 22cm
BATTERIES	2x 1,5V AAA	2x 1,5V AAA	5V, 1.0A, 1 x 3.7 V Li-ion	5V, 1.0A, 1 x 3.7 V Li-ion
PERSONAL USE	—	—	400mAh	400mAh
AVERAGE MEASUREMENTS	√	√	√	√
PULSE PRESSURE INDICATION	√	√	√	√
MOTION DETECTION	√	√	√	√
PULSE INDICATION	√	√	√	√
DAY/YEAR + TIME	√	√	√	√
ESH CERTIFICATION	√	√	√	√
CARRYING CASE	√	√	√	√
WARRANTY	5 YEARS	5 YEARS	5 YEARS	5 YEARS



\*Spare parts are provided

## Professional Blood Pressure Monitor DM-3000



### Additional Accessories

NI-MH 4,8VDC

Rechargeable battery

UNIVERSAL CABLE CHARGING

100-240V 50/60 Hz

SIZE CUFF

Size M-L: 22 - 32 cm/ 32-42 cm, soft finish.

CODE: 028-01-035



CODE: 028-02-109



CODE: 028-01-098



CODE: 028-01-099



### Automatic or Manual Operation

Oscillometry (AUTO) or listening (MANUAL) mode can be set by the user.



### Professional precision, easy operation

The speed of inflation and deflation can be easily adjusted and the maximum pressure of the cuff is adjusted according to the parameters of the patient.



### Fits every patient

Two cuffs (size: 22 - 32 cm (M) /32 - 42 cm (L)) to suit patients with different arm circumferences, washable and with a soft finish that gently wraps around the arm.



### 7 Memories

Records the last 7 measurement results and average values.



### Switchable power supply

It can operate with an AC adapter or internal Ni-MH rechargeable batteries, both included



### Dual Screen

Two easy-to-read displays representing the mercury column and digital results.



### Remote Use

The long inflation tube and 5-wheel trolley kit make it suitable for easy transportation.



### ESH Clinically Certified

In compliance with the IP2002 protocol of the European Hypertension Society.

## Wheel base for DM-3000 Blood Pressure Monitor

Rolling base for Nissei DM-3000 blood pressure monitor of robust construction. Suitable for Practices, Clinics and Hospitals to transport the sphygmomanometer to patient rooms. Height 1 – 1.65 cm.

## Professional Blood Pressure Monitor DM 500 Nissei



### Mercury free

The traditional mercury column has been replaced by the LCD column display.



### Rapid evaporation

During or after the measurement in a single movement.



### Manual Measurement

Manual systolic and diastolic measurements



### Liquid crystal display

Easy-to-read display representing the mercury column.



### Low consumptions

Operates on two AA (LR6) alkaline batteries.

## Professional Blood Pressure Monitor DM1000 Nissei



### Automatic or Manual Operation

Digital alternative to the manual sphygmomanometer



### Liquid crystal display

Backlit LCD column display with 1 mmHg graduations



### Fits every patient

Supplied with std size cuff 23-32 cm.



### ESH Clinically Certified

In compliance with the IP2002 protocol of the European Hypertension Society.



## TECHNICAL DATA DESKTOP B. P. MONITOR



**Professional  
Blood Pressure  
Monitor DM 500  
Nissei**



**Professional  
Blood Pressure  
Monitor DM1000  
Nissei**



**Professional  
Blood Pressure  
Monitor DM-3000**

TYPE	UPPER ARM	UPPER ARM	UPPER ARM
SIZE	12,2 x 31 x 8,6 cm	122,7x310,5x86,3mm	20,6x13,5x27,6cm
WEIGHT	780 g	800g	1,26 kg
MEASUREMENT TECHNOLOGY	Auscultatory / Oscillometric	Ακουστική	Auscultatory / Oscillometric
SYSTOLIC PRESSURE RANGE	50-250mmHg	50-250mmHg	50-250mmHg
DIASTOLIC PRESSURE RANGE	40-180mmHg	40-180mmHg	40-180mmHg
PRESSURE ACCURACY	±3 mmHg	±3 mmHg	±3 mmHg
PULSE MEASUREMENT RANGE	40-160 pul/min	40-160 pul/min	40-160 pul/min
PULSE ACCURACY	±5%	±5%	±5%
AUTOMATIC CLOSURE	3 MINUTES	3 MINUTES	3 MINUTES
LCD SIZE	-	Rear LCD Screen	300 digits colum LCD+10 digits segment LCD
MEMORIES	-	-	7
HANGER SIZE	23-32cm (soft)	23-32cm	22 – 32 cm (soft) / 32–42 cm (soft)
BATTERIES	2x 1.5V AA Alkaline	2 x AA LR6 batteries	4.8 Vdc Rechargeable NiMH batteries
PERSONAL USE	-	-	-
AVERAGE MEASUREMENTS	-	-	✓
PULSE PRESSURE INDICATION	-	-	✓
MOTION DETECTION	-	-	-
PULSE INDICATION	-	-	-
DAY/YEAR + TIME	-	-	-
ESH CERTIFICATION	-	-	-
CARRYING CASE	-	-	-
WARRANTY	2 YEARS	2 YEARS	2 YEARS



## MERCURY SPHYGMOMANOMETER



CODE:001-01-007

### Mac 506 Fixed Wall Mounted Mercury Sphygmomanometer

Fixed precision mercury wall pressure monitor  
MAC ANATS 506 high quality with modern ergonomic design  
Operation According to the Riva Rossi/Korotkoff measuring method  
Measuring scale 0 – 300 mm Hg with 2 mmHg graduations  
Measurement Accuracy  $\pm 2$  mmHg  
Pressure Gauge Accessories  
For hospital use  
**Warranty 2 years**



CODE: 018-01-007

### Target Fixed Blood Pressure Monitor Wall

Mercury wall-mounted sphygmomanometer Target fixed high-quality precision, with a modern ergonomic design. Measurement scale 0-300mmHg with a graduation of  $\pm 2$ mmHg, measurement accuracy  $\pm 2$ mmHg. It is fixed vertically and firmly to the wall for proper operation. For hospital use.  
**Warranty 2 years**



CODE: 024-01-006

### Target Fixed Blood Pressure Monitor Mercury Wall

Mercury wall-mounted sphygmomanometer Target fixed high-quality precision, with a modern ergonomic design. Measurement scale 0-300mmHg with a graduation of  $\pm 2$ mmHg, measurement accuracy  $\pm 2$ mmHg Cuff 100% cotton gray, 14x54cm, self-adhesive or hook closure with metal basket for placing the cuff. It is fixed vertically and firmly to the wall for proper operation. For hospital use.  
**Warranty 2 years**



CODE: 001-01-008

### Mac Anats 507 Wall Mounted Mercury Sphygmomanometer

MAC ANATS 507 high-quality precision rotating mercury wall-mounted sphygmomanometer with a modern ergonomic design.  
For hospital use.  
**Warranty 2 years**



## Target 001 Aneroid Sphygmomanometer with stethoscope

Built-in Arm Sphygmomanometer with stethoscope  
TARGET 001 analog with rotary Poiret valve, DRing cuff, measurement scale 0-300 Hg.

**Warranty 2 years**



CODE: 024-01-001

## Mac Check Anats 501 Aneroid Sphygmomanometer

Manometric pressure gauge Mac Check Anats 501 Japan. With built-in stethoscope, power meter, DRing cuff, measurement scale 0 - 300mmHg, and measurement accuracy  $\pm 3$ mmHg.

- Manometer with a diameter of 46 mm with a measurement scale from 0-300 mm hg, with a corresponding scale of a standard mercury manometer and with subdivisions per 10 units.
- Precision air release valve with easy to turn tap
- Circumference cuff 22 - 32 cm with velcro d-ring closure
- Pressure measurement range 0 - 300 mmhg
- Measurement accuracy  $\pm 3$  mm hg

**Warranty 2 years**



CODE: 001-02-100

## Erka Vario Desktop Aneroid Sphygmomanometer for Adults 285

Erka Vario 285 table pressure gauge with basket, Germany, manometer 0-300mmHg, diameter 150mm, with graduations every 2mm, high quality and precision, with valve and single tube.

**Warranty 2 year**



CODE: 006-01-112

## Erka Vario Aneroid Sphygmomanometer

Germany ERKA "VARIO" desktop clock, 0-300mmHg manometer, 150mm diameter, with graduations every 2mm high quality and precision, valve and single tube

**Warranty 2 years**



CODE: 006-01-114

## Erka Vario Children 288 Aneroid Sphygmomanometer

Desktop pressure monitor Erka Vario Children 288 Aneroid basic model (for general use) according to EN 1060. With accessories for mounting on a wall or on fixed rails.

**Warranty 2 years**



CODE: 006-01-115

\*A wide variety of ERKA analog pressure gauges are available upon order

ERKA.

target®

3M  
Littmann®  
Stethoscopes

CODE: 006-03-014

### Erka Stethoscop Sensitive 525.7591

Single Tube Membrane and Funnel Side Stethoscop, UMDNS Code:  
13-755 Medical device according to class 1  
Double cone stethoscop in a decorative box with instructions for use  
Sizes: Ø 52 mm



CODE: 006-03-009

### Erka Stethoscop Children's Erkaphon 545

Children's stethoscop double cone 30mm Erka Erkaphon 545



CODE: 006-03-004

### Erka Stethoscop Children's Finesse 548

Children's stethoscop double cone 30mm Erka Finesse 548



**Target Stethoscop Simple HS30A**

Single membrane bell for adults, stainless steel chest piece, Ø47mm membrane is sensitive for sound collection. Aluminum bell, with good acoustic conductivity. Single PVC pipe.



CODE: 024-03-001

**Target Stethoscop with Clock HS-30Z**

48mm aluminum single head stethoscope with external spring and Plastic olives, PVC Y-tube, has a clock on the top of the head. Individually packed in a styrofoam box black hard earphone olives black PVC tubing aluminum stethoscope head. With built-in clock



CODE: 024-03-005

**Target Stethoscop Neonatal/Infant HS30R2**

Silver Double Cone Stethoscope for Newborns and Infants. The diameter of the chest piece is 23mm. Used to listen to the heart and lungs of the newborn and baby. Zinc alloy head, good sound conductivity. Special double antifreeze ring design. Single PVC pipe.



CODE: 024-03-006

**Stethoscop Electronic**

The electronic stethoscope model HL 200 was designed for diagnostic medical purposes only. It can be used for electronic investigation and to listen to the biological heartbeats of the heart and lungs.



CODE: 174-03-001



CODE: 402-03-101

### Littmann Classic II Stethoscop Pediatric

The 3M™ Littmann® Classic II Pediatric Stethoscop is designed specifically for use with the youngest patients.



CODE: 056-03-039

### Littmann Classic III Stethoscop

Littmann Classic III 5807 With Light Blue Tube & Assorted Color Cap Finish 27In/69cm



CODE: 056-03-032

### Littmann Electronic Stethoscop with Bluetooth 3000 BK

Littmann Stethoscope Electronic. Bell weight 98 grams, aperture diameter 5.1. Applied in cardiology with high efficiency. It is 69cm long, the bell technology is double-sided.



KΩΔ: 056-03-017

### Littmann Electronic Stethoscop 3200 with Bluetooth

Littmann Stethoscope Electronic with Bluetooth. Bell weight 98grams, aperture diameter 5.1. Applied in cardiology with high efficiency. It is 69cm long, the bell technology is double-sided.



**Littmann Master Cardiology Stethoscop**

Littmann Stethoscope Cardiology. Bell weight 90gramm, diaphragm diameter 5.1. Applied in cardiology with high efficiency. It is 69cm long.



CODE: 056-03-008 (BLACK)  
CODE: 056-03-006(RED)

**Littmann Cardiology VI stethoscope**

Littmann Stethoscope Cardiology VI. Bell weight 87grams, diaphragm diameter 4.3. Applied in cardiology with high efficiency. It is 69cm long



CODE: 056-03-050

**Littmann Classic II Infant Stethoscop**

Littmann Stethoscope Classic II. Infant, Physical Assessment and Diagnosis. Bell weight 30gramm, diaphragm diameter 2.7. Applied in cardiology with high efficiency. It is 71cm long. Double Sided Codon Technology.



CODE: 056-03-012

**Littmann Lightweight II SE Stethoscop.**

Littmann Stethoscope Lightweight II SE. Physical Assessment and Blood Pressure. Bell weight 47grams, diaphragm diameter 5.4. Color Chart of Stethoscopes Contact us for the full range of spare parts Applied in cardiology with high efficiency. It is 71cm long. Double Sided Codon Technology



CODE: 056-03-052 (BLUE)  
CODE: 056-03-053(BURGURDY)

Contact us for the full range of spare parts

Color Chart of Stethoscopes



**RESPIRATORY EXERCISERS,  
NEBULIZERS, DISPOSABLES, SUCTION  
DEVICES & CONSUMABLES**



## Respiratory Trainer Digital iBreath LT350

The ChoiceMMed Respiratory Trainer LT350 strengthens the respiratory muscles to help you breathe easier, feel better and improve your athletic performance. The device uses dual purpose training. Low-intensity, endurance Aerobic training and high-intensity Anaerobic training, while strengthening the muscles of inhalation and exhalation.

The Lung Trainer LT350 is ready to use with 6 levels of resistance. Each of the resistance levels can be adjusted to 5 positions. Train at the most comfortable level for you with 30 available settings. Increased exercise capacity and endurance Greater mobility and independence

Better coping skills in your daily activities Reduced shortness of breath, coughing and wheezing Fewer visits to the Emergency Room and less need for hospitalization Reduced anxiety and depression

Increase in quality of life

**Indicator Type:** TN

**Dimensions and Weight**

Dimensions: 161.2mm (L) x 61mm (W) x 117mm (H) Weight: 170g (without batteries)

**Power requirements**

Two AA 1.5V alkaline batteries Power consumption: less than 10mA

Two 2500mAh AA alkaline batteries could work continuously for 300 hours.



CODE: 170-09-002

## Respiratory Trainer 3BALL

Lung trainer with three colored balls

**Specifications**

Made of transparent material

It has 3 chambers of 600, 900 and 1200cc/second in the 3 stages respectively (breathing volume).

It has 3 colored balls for easier reading of air volume. Light in weight and easy to carry. It has a special sticker with the patient's information. It has a small diameter spiral tube that connects to the practitioner and a soft plastic mouthpiece.

It is used individually for each patient



CODE: 168-09-006



## Kubyneb nebulizer



CODE: 318-09-021

KUBYNEB is a piston compressor aerosol therapy device approved for continuous operation. Compact in size, it has a convenient compartment for storing accessories and medicines. KUBYNEB is equipped with approved HI-FLO nebulizer that uses the most popular active ingredients.

### Specifications

Compressor dry pump without lubrication and/or maintenance  
 Diet 230 V-50 Hz  
 Maximum pressure 3,0 bar 43,5 psi 300 kPa  
 Operating pressure Free flow 1,3 bar 18,9 psi 130 kPa  
 Operating flow 16 l / minute  
 Neb-rate with 4 ml solution 5.2 L / minute/ 0.50 ml / minute  
 MMAD (µm) EN 13544-1 3.25  
 Mode Continuous  
 Noise (EN 13544-1) 60 dBA  
 Weight 1.45 kg  
 Dimensions (LxWxH) 15,5 x 15,5 x 10 cm  
 Warranty 2 years

## Fun-Neb Children's Nebulizer



CODE: 071-09-010

FUNNEB is a Children's treatment aerosol of 3A Italy that relieves respiratory problems. It is made mainly for domestic use. It is also equipped with a strong compression piston which does not need lubrication. The unit contains an air filter which is replaced periodically (every 70 applications). It is designed according to the current European construction and safety standards.

FUNNEB is equipped with the following components:

NEBJET nebulizer ampoule, Nozzle: Nose & Mouth Mask: Adults & Children, Air tube, Spare filters, Non-toxic & washable markers.

### Specifications

Maximum pressure: 185 kPa  
 Air flow: 10 L/min  
 Noise level: 58 dBA (EN13544-1)  
 Nebulization rate: 0.35 L/min (NaCl 0.9%)  
 Operating pressure: 60 kPa (0.6 bar)  
 Operational flow: 5 L/min  
 MMAD: 2.61 µm  
 GSD: 2.75

# NEBULIZERS CONSUMABLES

**Nebulizer Mask**



CODE: 071-02-016(ADULTS)  
CODE: 071-02-017(CHILDREN)

**Nebulizer glass Technojet Neb 1000**



CODE: 071-02-014

**Nebulizer glass Nebjet 201**



CODE: 071-02-015

**Spare parts set Technojet Neb200**



CODE: 071-02-023

**Nebjet Spare Parts Set Neb. 200**



CODE: 071-02-024

**Nebulizer filter 3AC224**



CODE: 071-02-012

**Nebulization Mask**



CODE: 401-09-004(ADULTS)  
CODE: 401-09-001(CHILDREN)

**Oxygen Mask**



CODE: 318-09-005(CHILDREN)  
CODE: 401-09-002(ADULTS)

**Adult Venturi Mask**



CODE: 401-09-003

**Adult Oxygen Cylinders**



CODE: 401-09-005



CODE: 071-09-017

## Aspeed2 AS800A Suction Device

3A Italy ASPEED2 PROFESSIONAL AS800A suction device, 1000cc tank, antibacterial filter and silicone tube, suction capacity 15lt, continuous operation, single pump.

### Specifications

Electric piston compressor with thermal protection device.

Single pump version: low flow, high vacuum unit

Security: T1,6A – 250V

Single Pump Release Voltage: 230/240V~50Hz 150VA

Adjustable vacuum level: 0 ~ - 0,85 bar

Single pump air flow: 15L/min

Dimensions: 196 x 357 x 185 mm

Weight of single pump version: 2,5 kg

Noise level: 55 dBA

Operating conditions:

Temperature: Minimum: 0°C, Maximum: 40°C

Air humidity: Minimum: 10%, Maximum: 95%

**Warranty: 2 years.**



CODE: 071-09-018

## Aspeed2 AS900A Suction Device

3A Italy ASPEED2 AS900A suction device, 1000cc container, antibacterial filter and silicone tube, Dual Pump.

### Specifications

Electric piston compressor with thermal protection device.

Double pump version: high flow, high vacuum unit

Security: T1,6A – 250V

Dual Pump Release Voltage: 230/240V~50Hz70VA

Adjustable vacuum level: 0 ~ - 0,85 bar

Dual Pump Airflow: 22L/min

Dimensions: 196 x357 x 185 mm

Double pump version weight: 3,2 kg

Noise level: 55 dBA

Operating conditions:

Temperature: Minimum: 0°C, Maximum: 40°C

Air humidity: Minimum: 10%, Maximum: 95%

Storage conditions:

Temperature: Minimum: -10°C, Max: 50°C

Air humidity: Minimum: 10%, Maximum: 95%

**Warranty: 2 years.**



CODE: 318-09-018

## Aspirot suction, 15Lt/min

### Specifications

Maximum Suction Pressure: -0,75 Bar

Flow Rate: 15Lt/min at -0.75 Bar

Noise Level with Canister: 59,60 dB

Weight: 2,95Kg

**Warranty 2 Years**



CODE: 318-09-016

## Aspirot suction, 40Lt/min

### Specifications

Maximum Suction Pressure: -0,80 Bar

Flow Rate: 40Lt/min at -0.80 Bar

Noise Level with Canister: 60,5 dB

Weight: 4,15Kg

**Warranty 2 years**



## Mini Aspeed Battery Plus Suction Device

Tracheotomy suction device, battery current, 3A model MINIASPEED BATTERY Plus can be applied even with a discharged battery by connecting the device to the current, with 1000cc container antibacterial filter and silicone tube, suction capacity 18lt/min. continuous operation with the battery for 35 minutes.

### Specifications

Reciprocating compressor with lifetime lubrication.  
 Metal housing painted with epoxy powder coating.  
 Trend: 12VDC  
 Adjustable vacuum level: 0 ~ - 0,80 bar  
 Air flow: 18L/min  
 Dimensions: 37x10x24 cm  
 Weight: 5,5 kg  
 Noise level: 60 dBA  
 Battery charger: PRI: 200 – 250V~ 50 – 60Hz SEC:12VDC 0.5A Multi-Voltage  
 Switching Battery Charger: PRI: 100 ÷ 240V~ 50 – 60Hz SEC: 14VDC 4,28A  
**Warranty: 2 years.**



CODE: 071-09-013

## MaxiAspeed 6.2 Wheelchair Suction Device

Wheeled power suction device 3A MACHIASPEED 6.2, Italy 60lt with two 2Lt containers, antibacterial filters, silicone tubes and foot switch.

### Specifications

MAXIASPEED 6.2p  
 90 l / min, 2 jars 2 l., Foot control lever  
 Equipped with 4 anti-static wheels with 2 brakes  
 Telescopic carrying handle  
 Plastic material with high strength electrical insulation according to the latest European safety standards  
 2 polycarbonate jars with safety valve (overflow protection)  
 Set of non-toxic sterile silicone tubes  
 2 pcs. 99% antibacterial hydrophobic filters  
 Vacuum regulator with bar centimeter  
 Automatic flow direction regulator for easy switching from one jar to another, avoiding the handling of contaminated parts  
**Technical Features**  
 High Flow - High Savings  
 Operating Cycle: continuous  
 MAX VACUUM (adjustable): 0 x - 0.90 bar 0 x - 90 kPa  
 MDD Class: IIa  
 Weight: 15 Kgs. about.  
 Dimensions: 470x580x560 mm  
**Warranty: 2 years**



CODE: 071-09-009

## Suction Device MaxiAspeed 9.4

Wheeled power suction device 3A MAXIASPEED 9.4 from Italy, with 2 containers 4lt., antibacterial filters, silicone tubes and foot switch.

### MAXIASPEED 9.4p

90 l / min, 2 jars 4 l., Foot control lever  
 Equipped with 4 anti-static wheels with 2 brakes  
 Telescopic carrying handle  
 Plastic material with high strength electrical insulation according to the latest European safety standards  
 2 polycarbonate jars with safety valve (overflow protection)  
 Set of non-toxic sterile silicone tubes  
 2 pcs. 99% antibacterial hydrophobic filters

### Specifications

High Flow – High Savings  
 Operating Cycle: continuous  
 MAX VACUUM (adjustable): 0x - 0,90 bar 0 x - 90 kPa  
 Weight : 15 Kgs. about.  
 Dimensions: 470x580x560 mm  
**Warranty: 2 years**



CODE: 071-09-008

## DISPOSABLES FOR SUCTION DEVICES

Suction Jar 1000cc 3Ac286



CODE: 071-02-008

Jar lid 1000cc 3Ac286



CODE: 071-02-009

Suction Filter



CODE: 071-02-003 ( LARGE 2200/911)  
CODE: 071-02-013(SMALL 2200/36)

Suction Pipe 0.24 3A476



CODE: 071-02-005 (0,24 3A476)  
CODE: 071-02-006(1,3 3A561)

Suction Jar disposable 1lt



CODE: 071-02-019

Flow Regulator Suction



CODE: 071-02-004

Miniaspeed Neo 3A3844 charger  
&  
Miniaspeed charging cable Neo 3A1493



CODE: 071-02-025(ΦΟΡΤΙΣΤΗΣ)  
CODE: 071-02-026(ΚΑΛΛΩΔΙΟ)

Battery for Mini Aspeed 12V 3.3Ah



CODE: 071-02-010

# DIAGNOSTIC DEVICES



Multicare In 3 parameters meter  
(Sugar - Cholesterol - Triglycerides)



CODE: 155-05-010

MULTICARE IN is a multiparameter self-monitoring system for monitoring metabolic disorders. MULTICARE IN can accurately measure blood glucose, cholesterol and triglycerides in the same device within seconds with a small fingertip blood sample. The Multicare in 3 parameter meter is manufactured in Italy by Biomedical Systems International.

The package contains a pack of cholesterol diagnostic strips.

Measurements are made simply and quickly using tapes:

Blood glucose measurement with the Multicare in sugar strips (electronic measurement).

Cholesterol measurement with the cholesterol strips Multicare in.

Triglyceride measurement with the Multicare in. triglyceride strips.

**The packaging is such that it is not easily damaged during transport and storage**



## TEST STRIPS

Multicare In test strips  
glucose 50 Pieces



CODE: 155-05-011

Multicare In test strips  
Cholesterol 25 Pieces



CODE: 155-05-012

Multicare In test strips  
Triglycerides 25 Pieces



CODE: 155-05-013

Multicare In test strips  
Triglycerides 5 pieces



CODE: 155-05-031

Multicare In test strips  
Cholesterol 5 pieces



CODE: 155-05-032

Software (CD&USB)  
Multicare In



CODE: 155-05-016

## Lux meter

The meter is manufactured in Italy by BSI Biochemical Systems International. He is an expert for health professionals and doctors. Lux is a professional multiparameter system for monitoring 6 blood parameters involved in common pathologies such as metabolic syndrome and anemia

Type of measurements: total cholesterol, HDL good, LDL bad, Triglycerides, HGB Hemoglobin and Sugar (with 1 finger prick, 4 measurements are made of total HDL, LDL, Triglycerides). Cholesterol is transported inside blood vessels associated with HDL high-density lipoproteins and LDL low-density lipoproteins. HDL is the "good" form, which reduces the risk of cardiovascular disease, because it is able to remove cholesterol, it is considered the "cleaner" of the blood. LDL is the "bad" form because it tends to leave cholesterol on the walls, forming deposits. The total level of cholesterol present in the blood is the sum of LDL and HDL lipoproteins, so it is not a given that it absolutely determines cardiovascular risk, what matters is the ratio of total cholesterol to HDL, which should be less than 5 for men and 4.5 for women.

- MEMORY; up to 1000 measurements
- Accuracy; Reflex measurement for cholesterol, triglycerides, HDL and hemoglobin

• Complete lipid profile in 3 minutes, hemoglobin in 5 seconds.

• Small sample; 3x15 µl for lipids, 7 µl for hemoglobin

• PIPETTES AND TIPS Provided inside the package Benefits

Fast results in just three minutes

Safe thanks to the elimination of the tape to avoid contamination.

Safe thanks to the elimination of the tape to avoid contamination.

## Lipid Measuring test strips LUX profile



CODE: 155-05-201



CODE: 155-05-200

## OGCare Blood Glucose Meter

OGCare blood glucose meter. Electrode strip technology without coding. Immediate results in 5 seconds with a small 5µL blood sample, 300 memory locations & measurement range 20-600mg/dl. Ability to mark the results after a meal.

The OGCare system includes:

OG Care meter

OG Care tapes 10 pieces

Painless piercing pen

Sterile nailers 10 pieces

Instructions for use

Ability to transfer data to H/Y+

## OGCare Glucose Test Strips 50 sq



CODE: 155-05-080



CODE: 155-05-081

## Ua Sure II Uric Acid Meter

The UA Sure Uric Acid Meter measures blood uric acid levels with a range of 3 – 20 mg/dL (179-1190 µmol/L). It has a large LCD screen and a memory of 10 measurements. Powered by 1 3V lithium battery (CR2032). The process is simple and fast, requiring coding with a chip. Minimum blood sample 6µL

The package includes: The meter, 5 strips of uric acid, Painless puncture pen, Carrying case, Battery, Chip code, Instructions for use and Result recording form.

## Ua Sure II Uric Acid Test Strips



CODE: 222-05-003



CODE: 222-05-004

# DIABETES SUPPLIES – PENINSULA NEEDLES



Disposable, sterile insulin pen needles from 30G to 33G for insulin administration. They are non-toxic, propylene-free, integrated needles, suitable for all commercially available pens. They have a thin wall that reduces the pain and the duration of the infusion, a larger internal cannula, for a better flow of the medicine. Different colored propylene cap to distinguish each needle size. With triple needles for painless piercing, with silicone oil lubricant at a low content of 0.25mg/cm<sup>2</sup>. Does not contain latex, to avoid allergies. Sterilized with ethylene oxide for 5 years from the date of sterilization.



## **Painless Piercing Pen**

Pen for personal use  
For the quantitative assessment of blood glucose  
Read the user manual before use



## Micropen Safety A.T./G Insulin Pen Needle



191-10-531 100-31G5 31 5mm Violet  
 191-10-631 100-31G631 6 mm Blue  
 191-10-831 100-31G8 31 8 mm Orange  
 191-10-432 100-32G4 32 4 mm Green Light  
 191-10-532 100-32G5 32 5 mm Pink  
 191-10-632 100-32G6 32 6 mm Dark blue  
 191-10-433 100-33G4 33 4 mm Green

Sterile, non-toxic, non-pyrogenic, insulin pen needle. It is sterile as long as the needle cap is intact. After each injection remove the needle from the pen and discard it. Store in a cool, dry place away from chemicals. Single-use (for a single patient). Reuse is prohibited: possible infections. The box contains 12 boxes of 100 pieces (1,200 pieces).



## Insulin Pen Needle Micropen Rays Italy

ΚΩΔΙΚΟΣ ΒΕΛΟΝΑ ΜΗΚΟΣ ΧΡΩΜΑ  
 257-10-431 100-PEN31G4 31 4mm Light Blue  
 257-10-531 100-PEN31G5 31 5mm Violet  
 257-10-631 100-PEN31G6 31 6mm Blue  
 257-10-831 100-PEN31G8 31 8mm Orange  
 257-10-432 100-PEN32G4 32 4 mm Green Light  
 257-10-532 100-PEN32G5 32 5 mm Pink  
 257-10-632 100-PEN32G6 32 6 mm Dark Blue  
 257-10-433 100-PEN33G4 33 4 mm Green

Packed in an individual blister pack with safe medical paper that guarantees maximum safety of sterilization and prevention of destruction or damage of the paper when opening the package. The quantity of the needles, which are 100 pieces, as well as their size, is mentioned in the box packaging. The box contains 12 boxes of 100 pieces (1,200 pieces).



## DIABETES CONSUMABLES

### Insulin Case-Fridge Dimensions 21x11x7cm



CODE: 153-19-004

Insulin case with gel. It helps to always have the dark packages in their frozen state. Good for traveling with refrigerated medical bags or coolers As well as helping you avoid any problems on the trip, this will come in handy if you need medical help while you're away. Dimensions: 21x11x7cm

#### Characteristics:

- Holds 2 medicine vials and a syringe pen
  - 2 pockets for small supplies. One is under the ice gel, so you can use the bag for testing or daily use, since your medications are safely in the fridge
  - Re-chillable ice gel (included)
  - Keep the medicine cold for up to 12 hours.
- Attractive, durable nylon construction, you can wash it.

### Safety Lancets 30G 50 pcs.



CODE: 529-10-001

#### Characteristics

The Safety Needle for one use is made of polyethylene and the needle ( Austenitic stainless steel ) .

The dimensions of the sharpener are 32mm ± 1mm. body length: 22.8 mm ± 0.5 mm, the size of the needle cap is 9 ± 0.5 mm. The outer needle is 3.3 mm ± 0.3 mm.

Needle diameter: 30G: 0.298-0.320mm;

Needle puncture not greater than 0.7N

•Use : The disposable lancet is used to collect capillary blood samples during blood glucose monitoring. The sterile disposable needle should be stored in a clean, ventilated place and keep the temperature at 0-40 °C , humidity at 0-80% RH , Pressure at 1KPA

•Packaging : 50 pieces / box

•Caution : Single use by one person.



CODE: 010-30-094

### Sterile metal lancets Romed

#### Characteristics

Product Material : stainless steel

Spike length (including stitch point) : 4cm

Needle size: 23G

Stitch point thickness: 0.15 – 0.16 mm

Sterilization method: gamma rays

Expiration date : 5 years after sterilization

Packing: per piece sterile in paper bag, 200 pcs in inner box, 200 inner boxes (= total 40,000 pcs)



CODE: 010-30-010

### Alcohol Preps 65x30 Romed

PURPOSE Skin cleansing before injection.

composition

Wipe: non-wool material (blend of polyester and glucose), 50 g/m<sup>2</sup>

Thickness 0.035 mm, 2-ply,

Dimensions: 65 x 30 mm ± 2 mm

Active ingredients: 70% isopropylene alcohol

Inactive ingredient: water

Liquid 0.4 – 0.6 ml per package

Alcohol content ± 0.02 g/cm<sup>2</sup>, which is ± 0.45 per piece

Aluminum packaging: paper, foil and plastic. Weight of one package: 73 g/m<sup>2</sup>, thickness: 0.06 mm



# DIAGNOSTIC TESTS



## SARS-Covid -19 Antigen Rapid Detection Test (Rapid Test) by Joysbio

For in vitro qualitative detection of SARSCoV-2 nucleocapsid antigen in nasal swabs (NS) directly from individuals suspected of having COVID-19 after symptom onset. This test is provided for use by clinical laboratories or healthcare workers only. Not suitable for children under 3 years old.

### Characteristics

Clinical certification by an independent European clinical study. Rapid detection of SARS-COV-2 nucleocapsid antigen in less than 15 minutes. Less invasive nasal swab sample collection No special equipment required. Cost-effective solution for large-scale rapid test implementation Contents Box of 20 x Rapid Test Kit The Rapid Test Kit includes: 20pcs x test cassettes 20pcs x disposable tubes with 20 nozzles 20pcs x disposable bottles with 350µl buffer solutions 20pcs x sterile swabs Instructions for use (Greek / English) Paper base



CODE: 628-05-002

## SARS-Covid -19 Antigen Rapid Detection Test (Rapid Test) by All Test

For professional in vitro diagnostic use.

Manufacturer: HANGZHOU ALLTEST BIOTECH CO., LTD  
HANGZHOU China.

Authorized Representative for Europe: MEDNET GMBH, Germany.

Distributor in Greece: ANATS S.A.

### Contents :

- 20 test cassettes
- 20 filled buffers
- 20 sterile swabs
- 1 instruction manual
- 1 paper base



ΚΩΔ: 649-05-002



## DIAGNOSTIC TESTS



CODE: 649-05-003

### Rapid SARS-Covid -19 Antigen Detection Test (Self Test) by All Test

For personal in vitro diagnostic use.

Manufacturer: HANGZHOU ALLTEST BIOTECH CO., LTD  
HANGZHOU China.

Authorized Representative for Europe: MEDNET GMBH,  
Germany. Distributor in Greece: ANATS S.A.

#### Contents :

- 1 Test cassette
- 1 Sterile Stylus
- 1 Extraction buffer
- 1 Package insert
- 1 Biosecurity bag
- Instructions for use



CODE: 348-05-005

### Flu Test INFLUENZA A/B

INFLUENZA A/B is a rapid diagnostic test designed and manufactured specifically for influenza A and B viruses. Its use enables health personnel to make a real and documented diagnosis of the influenza virus within 10 minutes.

The diagnosis is made on a nasal swab sample. Comparable to the positive RT-PCR method (reverse transcription-polymerase chain reaction in real time) the relative sensitivity and specificity of the test are:

Susceptibility/Specificity A strains of Influenza B strains of Influenza

Relative sensitivity 84,4% 84,3%

Specialty 94,7% 95,5%

Each INFLUENZA A/B test includes:

#### •Test table

Hermetically sealed in a moisture-proof frame (along with a desiccant) which receives the sample and the test reaction takes place.

- 1 Container of solution sufficient for 30 tests
- 1 Sampling pen for collecting nasal discharge
- 1 small mixing container (of sample and solution)
- 1 dropper

To apply the sample from the mixing container to the test table.

It is included in boxes of 10 tests, each of which is sealed independently in a different bag. It is certified in Europe. Product life: 24 months

## Pregnancy Test CLEAR TEST



CODE: 010-05-001

The HCG (Human Chorionic Gonadotropin) test is a one-step lateral chromatographic immunobiological test. The test consists of a conjugate pad containing monoclonal  $\beta$ -HCG antibodies conjugated to colloidal gold and a nitrocellulose membrane coated with monoclonal  $\alpha$ -HCG antibodies in the control area of the test and goat IgG in the control area of the test.

### Results in 5 minutes

Quick / Quick

Simple / Simple

Reliable 99% / Accuracy 99%

High Sensitivity / High Sensitivity

Precise Result / Precise Result

The test is a qualitative immunological test. When the appropriate amount of urine sample is well applied, the sample is moved by capillary action through the control device. The T-line – a burgundy zone in the control region, develops rapidly if the concentration is close to or higher than 25 mIU/ml in the sample. The T-line will develop if HCG is absent or lower than 25 mIU/ml in the sample. The C-line – a burgundy zone in the control area of the test, should always appear regardless of the presence of HCG. It serves as an internal quality control of the control system.

Specification 4.0 mm

## Ovulation Test



CODE: 348-05-002

Materials contained

- separately tested films

- instructions for use

Materials Required

- Containers for collecting urine samples

- Stop the clock or timer

Storage and Stability

- The kit should be stored at 2-30°C until the expiry date printed on the sealed container.

- The test should remain in the sealed pouch until used.

Do not freeze

## DIAGNOSTIC TESTS

### Hemoglobin Detection Test FOB Fecal



CODE: 348-05-007

The FOB (faecal) rapid detection test is a rapid, visually readable immunoassay for the qualitative detection of human hemoglobin in human faecal samples. The purpose of the test is to be used as an auxiliary tool in the diagnosis of pathological conditions of the lower gastrointestinal tract.

Use: Faecal occult blood (FOB) Immunoassay for the qualitative detection of human hemoglobin in stool samples.

#### MATERIALS CONTAINED IN THE PACKAGING

- 25 test devices in individual packages
- 25 sampling tubes: with about 2 ml buffer solution (contains very small amounts of sodium azide below the established permissible limit)
- 25 patient information forms regarding stool sample collection
- 25 stool collection cards
- 25 plastic bags
- 1 instruction sheet

#### NECESSARY MATERIALS NOT CONTAINED IN THE PACKAGE

- Absorbent paper to prevent splashing when opening the tube
- A clock with a timer or stopwatch

#### STORAGE AND STABILITY

- The test must be stored at 2°C to 30°C until the expiration date printed on the sealed bag.
- The test must remain in the sealed bag until use.



CODE: 348-05-010

### Urine strips 100 pcs .

Urine strips are stable plastic strips on which the reagent areas are placed. The test is for the detection of one or more of the following analyzes in the urine: ascorbic acid, glucose, bilirubin, ketone (acetoacetic acid), specific gravity, blood, pH, protein, urobilinogen, nitrite and leukocytes.

### Stomach Helicobacter H PYLORI AG Test

#### Helicobacter pylori

Test for rapid detection of Helicobacter pylori (H. pylori) antibodies in whole blood, serum and plasma. The test is a rapid, visually readable immunoassay for the qualitative detection of H. pylori-specific antibodies in human whole blood, serum samples or plasma. The purpose of the test is to be used as an auxiliary tool in the diagnosis of H. pylori infection.

#### MATERIALS CONTAINED IN THE PACKAGING

- Individually packaged test devices. Each test contains dye-conjugated antigens and reagents that are pre-coated to the respective areas
- Disposable pipettes. For introducing the samples
- Buffer Phosphate buffered saline with Tween 20 and preservative
- Information form with instructions for performing the test

#### MATERIALS REQUIRED NOT CONTAINED IN THE PACKAGE

- Sample collection container. To collect the sample
- Stopwatch. To measure time
- Centrifuge. For the preparation of serum / plasma samples



KΩΔ: 348-05-007



## Drug Test

The Urine Drug Test is an immunochromatographic method for rapid qualitative detection of drugs and their main metabolites in human urine, from a predetermined detection limit.

It is a fast and reliable diagnostic test, suitable for the detection of the most common narcotic substances (Methadone, Hashish, Cocaine, Amphetamine/Methamphetamine, Morphine, Benzodiazepine, Barbiturates, etc.).

They are offered in boxes of 25 tests, each sealed in an individual package detecting from one to 11 substances. They show results in 5 minutes and must be performed by a health professional.

AVAILABLE SUBSTANCE COMBINATIONS:

4-parameter Drug Test: Morphine, Hashish, Cocaine, Benzodiazepine / BZO, COC, MOR, THC



CODE: 348-05-017

## Strep-A test

### MATERIALS CONTAINED IN THE PACKAGING

1. Strep A test device
2. Instructions
3. Disposable sample dropper
4. Buffers A and B
5. Columns sterile

6. External positive and negative control

### PRECAUTIONS AND EXTERNAL CONTROL

StrepA rapid test kits should be stored at room temperature between 4 and 30 °C (40-86 °F). The test device (strip) is sensitive to moisture and heat. Perform the test immediately after removing the test device from its plastic bag. Do not use the test after the expiration date printed on the package



KΩΔ: 348-05-004

## Syphilis Test Ab Combo Rapid Test

The Syphilis test uses a combination of syphilis antigen-coated particles and anti-human IgG and IgM for the qualitative and selective detection of TP antibodies in whole blood, serum or plasma. The sealed single-use package contains a sample dropper. Packing: kit 30 tests.



KΩΔ: 348-05-016

## HIV test 1/2 ABLUS COMBO RAPID TEST



CODE: 348-05-014

High-sensitivity rapid membrane flow assay for the detection of HIV antibodies (against recombinant antigens and synthetic peptides). HIV I/II uses the immunochromatographic method to detect HIV 1/2 antibodies with a sample of whole blood or serum, or plasma. A highly purified GP 41 antigen, recombinant p24 binding to subtype 0 specific synthetic peptide representing HIV-1 and gp36 representing HIV-2 are used in this test to detect HIV 1 & 2 antibodies . No additional equipment is needed to perform the test. Result in 10 minutes. The tests are for professional use only. Detailed instructions for use accompany the tests. The package contains 20 tests. They are kept at room temperature.  
Sensitivity : 99% Specialty : 99,8%

The HIV test The HIV virus (AIDS) requires a special test for its detection, since it cannot be detected with a general blood test. The scientifically accepted modern test method is the 4th generation antibody/antigen blood test, which is suitable for almost 100% of cases.

## Troponin Test (TROPONIN I)



CODE: 348-05-013

The Troponin I Test is a rapid one-step immunochromatographic test for the qualitative detection of human cardiac Troponin I in whole blood, serum or plasma samples as an aid in the diagnosis of Myocardial Infarction (MI).

- Possibility of Diagnosis 4 hours after the appearance of the episode.
- Troponin I is released into the blood 4-6 hours after the onset of pain. It remains at detectable levels for 6-10 days in contrast to CK-MB which returns to normal values after the third day.
- Troponin I release has also been found in other cardiac conditions such as unstable angina, congestive heart failure, ischemic injury due to coronary artery bypass grafting.
- Due to its high specificity and sensitivity in myocardial tissue, Troponin I has become the most preferred biomarker for detection of myocardial infarction.

Accompanying materials  
Troponin I Test (30 pieces)  
1 reagent  
Disposable pipettes  
Inner packaging  
Solution

## Hbsag Combo Rapid Test (HEPATITIS B)



CODE: 348-05-015

The Anti-HBs (HBsAb) Test is a rapid chromatographic immunoassay for the qualitative detection of hepatitis B virus antibodies in human blood/serum/plasma.

The anti-HBs test uses solid-phase immunochromatographic technology for the qualitative detection of anti-hepatitis B antibodies in human blood/serum/plasma. The test is a two-site in which the combination of polyclonal antibodies and recombinant HBs antigens are used for the selective detection of antibodies against HBs antigens with a high degree of sensitivity. Recombinant HBs antigens are immobilized on the test region 'T' and goat anti-HBsAg polyclonal antibodies are immobilized on the control region 'C' of the membrane.

Packing: 30test/kit

# SCALES

5,3

5

K G



Medical, laboratory, professional scales, baby scales and height measuring rod





**Romed**<sup>®</sup>

CODE: 010-36-017

## Scale Digital Romed 180kg

The scale is a high precision digital scale. The scale can measure weight, body fat, body water, muscle percentage. 6mm toughened safety glass platform. Auto reset and power off function. Low battery and overload indicator Hardware: Glass + ABS plastic Dimensional scale : 30,0 x 30,0 x 1,75 cm

Specifications  
LCD screen  
Net Weight Scale: 1,55 kg  
Maximum weighing weight: 180,0 kg  
Accuracy: 0,1 kg  
Capable of measuring 9 users



CODE: 236-36-002

## Floor Scale 125kg BS004

Analog Floor Scale BS004. Measure up to 275 lbs or 125 kg.

Specifications  
Shape: Square  
Measurement method: Analog  
Material: Plastic  
Accuracy: 1 kg  
Easy clean ABS cover + PU leather  
Maximum weight: 125 kilos



CODE: 236-36-001

## Digital Glass Floor Scale

Digital Glass Floor Scale. High precision sensors. Large LCD screen for easy reading. Automatic shutdown. Weight up to 150Kg.

Specifications  
Tradename: TIANSHENG  
Model Number : TS-2005D  
Type: Household Scale  
Screen Type : LCD  
Maximum Weight : 180kg  
Accuracy: 0,1kg



**SOEHNLE**  
PROFESSIONAL

CODE: 036-36-024

## Digital Floor Scale 7810 150Kg

The digital personal scale 7810 from Soehnle Professional is characterized by a simple, easy and safe operation. The plastic surface of the weighing platform is very easy to clean. With a weighing capacity of up to 150 kg, this digital personal scale is suitable for weighing most people. The LCD screen with 26 mm high digits allows easy reading of the detected weight.

Specifications  
Simple to use  
Easy-to-read LCD display , digit height 26 mm  
Units in kg, lb or st , switchable at the bottom of the scale  
Maximum Weight: 150kg



**iHealth**

CODE: 374-36-006

## iHealth Fit HS2S scale

Easy and compact body analysis scale. Bluetooth connected smart scale measures your weight, calculates BMI (Body Mass Index), lean body mass, bone mass, muscle mass, body fluids, body fat indices, daily caloric intake, visceral fat percentage and displays them on backlit screen. Light indicator (LED). Tracks data, graphs and history in the iHealth MyVitals app. Store up to 500 measurements per user before syncing. Share your data with your healthcare professional or family. Bluetooth Sync, easy to install.

Specifications  
Dimensions: 306mm x 306mm x 26.6mm  
Weight: 1850g  
Battery: 4 AAA 1.5V batteries  
Range: Weight: 5kg-180kg (11 lb-400 lb) Body Fat: 5% -65%  
Resolution / Accuracy : 0,1kg  
Operating environment: Temperature: 5 ° C ~ 40 ° C, humidity: 20-85%  
RH Memory for up to 8 users, with 500 readings per user

## Digital Baby Scale 20Kg Bamby

Electronic scale for babies. With 4 sensors of high quality and precision. ON/OFF button and curb weight management. Manual weight unit selection. Automatic reset and power off. Low battery and overload indicators. Yellow platform ABS Technical Characteristics  
 1 Lithium Battery 3V DC type CR2032  
 Min / Max flow rate 0.5 / 20kg  
 Grading Scale 5g  
 LCD Screen Size 72 x 28 mm  
 Device Power 3V DC-1 battery type CR2032 (included) Battery Life 3,000 counts  
 Dimensions 560 x 330 x 53 mm  
 Weight 4.5kg (including battery)  
 Warranty 1 year



**CA-MI**

KΩ: 521-36-001

## Digital Baby Scale Romed BS003

The Romed BS-003 Baby Scale is a high precision digital scale.

Specifications  
 Maximum weight: 20kg  
 Accuracy: 0,005 kg  
 Accuracy range 0-5kg: 0,025 kg  
 Accuracy range 5-10 kg: 0,030 kg  
 Accuracy range 10-20kg: 0,040 kg  
 Units: kg and lbs  
 LCD screen  
 Hold function for recording the weight of a moving child  
 Ballast function. Automatic reset and power off  
 Low battery and overload indicator  
 Action : 2 AAA batteries (included)  
 Material : ABS plastic  
 Dimension scale : 56.0 x 33.0 x 4.6 cm  
 Net Weight Scale: 1.68 kg



**Romed®**

KΩ: 010-36-001

## Digital Baby Scale SECA 354

Technical Characteristics :  
 Maximum Weighing Weight: 20 kg  
 Rating: 10 g < 10 kg > 20 g  
 Seca Features: TARE, BMIF, Auto-HOLD,  
 Automatic shutdown  
 Weight: 2,3kg  
 Power supply: Battery  
 Dimensions: 552 x 156 x 332 mm



**seca**  
 Precision for health

KΩ: 048-36-020

## Soehnle Infant measuring body height rod

The Soehnle 5001 height meter is a different way of measuring body height. Not with a measuring tape or a height rod, but using an electronic ultrasound measuring system. Easy to use, durable housing and timeless design - these are features of the Soehnle Professional height measuring unit.

### Characteristics

Easy to use, fast and accurate  
 White plastic casing  
 Extremely light, weighing only 300g  
 Battery powered: 9V battery (not included)  
 LCD screen, 10mm high  
 Complete plane (help to find the horizontal)  
 Voice recognition  
 Auto-off function (approx. 30 seconds after last measurement)  
 Measuring range Cm 50-300 Section Cm 1  
 Dimensions Mm 500 x 340  
 Weight 300 g



**SOEHNLE**  
 PROFESSIONAL

KΩ: 036-36-049

## MEDICAL SCALES



**seca**

CODE: 048-36-002  
CODE: 048-36-015 (WITH GAUGE)

### Mechanical scale Seca 786 150Kg

Technical characteristics of balance 786  
Scale type Pillar scale  
Weighing surface 278 x 75 x 273 mm  
Screen Type Engineering  
Maximum weighing weight 150 kg  
0.5 kg graduation  
Size 295 x 910 x 500 mm  
Weight 6.9 kg  
224 altimeter technical data  
Measuring range: 6-200 cm  
Rating: 1 millimeter  
Dimensions (WxHxD): 55 x 1,480 x 286mm  
Divider dimensions (WxHxD): 260 x 90 x 50mm  
Net weight: 1.4 kg

### Scale Digital 250Kg

Specifications  
Large non-slip low profile platform.  
Dimensions: 36,9x127,9x60,9cm.  
Maximum weight: 220kg.  
Accuracy: Per 100gr.  
Large LED digital display screen.  
Built-in height meter from 120cm to 202cm.  
Automatic on/off.  
Warranty 2 years.  
Displays the user's weight and BMI.  
Simple, Fully automatic with no operation buttons.  
Large glass screen displays results in large red letters.  
Built-in height meter with display on the digital display.  
Weighing Range : 0-250 kg, Gradation by: 100 g  
Automatic closing, RS232 interface upgrade port  
Dimensions: 36.5x 49 x 89 cm (W x D x H), Weight : 13.6kg



**SOEHNLE**  
PROFESSIONAL

CODE: 036-36-359 (7830.30)  
CODE: 036-36-096 (WITH GAUGE 7831)

### Soehnle Bed Scale

Soehnle Hospital Bed Scale 7711. Certified according to class III, Medical device directive (MPG) class 1 with Easy lifting system.  
500kg weight scale  
From 100 gr. up to 300kg  
From 200 gr. up to 300kg  
Specifications  
Electronic weight system  
Wireless transfer of measurement data from the foot sensor to the pointer  
Scale 10 meters. Inner surface in PC/T (pre-priestly). LCD screen, digital letter height, 20 mm. Power supply battery and main connections Battery life 10 hours before recharging required. Mechanism lifts that separated by a foot sensor.  
Charger for 4 batteries (foot sensor) with quick vibration.  
Delivery includes 8 rechargeable batteries



**SOEHNLE**  
PROFESSIONAL

CODE: 036-36-066

### Soehnle Digital electronic wheelchair scale

Soehnle 7802 fully electronic chair scale  
Specifications  
Easy-to-read display with 15 mm digits  
Hold functions  
Raised arms for easy access to the chair by the patient  
Works with electricity or batteries (4 x 1.5 V mignon batteries)  
Battery life time up to 150 hours, User manual in Greek,  
Weighing range: 200 kg (440 lb)  
Accuracy : 100 g, Total weight: 27 kg  
Size : 580 x 1100 x h 930 mm  
Power : 230 V / 50-60 Hz, 10 mA, 2.2 VA  
It is manufactured in Germany



**SOEHNLE**  
PROFESSIONAL

CODE: 036-36-076



## PROFESSIONAL SCALES

### Scale Seca 760 Mechanical

Properties: Strong construction.  
Large and easy to read dial.  
Low profile and large platform.

Accurate and durable.

Specifications

Color Black, Ecrú, Blue

Net weight 0.6 square 3.5 kg

Platform width 265 mm

Platform height 70 mm

Platform depth 265 mm

Product width 303 mm

Product height 118 mm

Product depth 470 mm

1 kg graduation

Capacity 150 kg



**seca**  
Precision for health

CODE: 048-36-017 (BLUE)  
CODE: 048-36-030 (BLACK)  
CODE: 048-36-033 (BLUE)

### Scale Digital Seca 813

Step-off where the patient steps on the scale, and after stepping down the result is displayed

Auto-hold where the value display remains for a few seconds on the screen before the scale turns off

The Seca 813 Robusta Digital Scale has a wide steel base. It is completely flat and facilitates people with mobility difficulties. The Seca 813 scale is suitable for gyms, pharmacies and also for the home. The scale measures 433 x 47 x 373mm and weighs 2.9kg.

Specifications

Type Digital

0.1 kg graduation

Maximum weighing weight 200 kg

Size 433 x 47 x 373 mm

Weight 2.9 kg



**seca**  
Precision for health

CODE: 048-36-034

### Scale Digital 7801 with suitcase carrier

Germany Soehnle Weighing Platform

Specifications

Main power supply: power adapter 230V / 50 / 60Hz,

10mA, 2.2VA, 2m power cable

Battery power for about 350 hours with 4x 1.5V mignon (not included)

Auto power off function in battery mode.

Platform dimensions M 310 x W 275 mm

Quatro-Tronic: platform with 4 load sensors.

Digital display: Housing made of durable plastic. It does not wear out and does not need maintenance.

Simple one button operation.

Unit conversion to kg / lb

Soehnle Electronic Height Gauge 5001.01

Weighing range up to 200kg

Weighing per 100gr

Scale dimensions: 400x310mm and weight 6kg

Dimensions of yoke with suitcase: 605 x 395mm and weight 7kg

Warranty



**SOEHNLE**  
PROFESSIONAL

CODE: 036-36-052

## Micromeasuring Scale 5k Soehnle 5k 8131.01



**SOEHNLE**  
PROFESSIONAL

CODE: 036-36-055

The Digital Scale 8131 from Soehnle Germany is used, either as an interval or contour scale, as a control or letter scale. The Soehnle 8131 electronic compact scale is just the right scale for all environments where you want to weigh quickly and reliably.

Specifications

One button operation for easy use

Receive counterweight across the entire weighing range

Easy to read LCD display

Screen size 12.7mm

Battery operated with 1x3v CR2430 Lithium

Energy saving function

Easy cleaning of the plastic casing

The weighing platform and upper housing are made of stainless steel

Platform dimensions 16x16 cm

Weighing Range 5kg

Weighing per 1 gram

Warranty

## Digital Precision Scale Soehnle 9230 0.01gr



**SOEHNLE**  
PROFESSIONAL

CODE: 036-36-045

Germany Soehnle 9230 Precision Micrometer Digital Scale.

Ideal for laboratories, patisseries, food industry areas, pharmaceutical industries, hair salons and other businesses that need micro measurement.

Graduation 0.01 gr.

The electronic precision scale Soehnle-Professional 9230.01 is a very high precision measuring instrument ideal for weighing small quantities.

Specifications

Weighing and calibration

Piece count

Weight percentage function

Specifications

Measuring range: 0,6kg

Rating: 0,01gr

Scale dimensions: 213mm x 193mm x 66mm

Platform: stainless steel

Power supply from the 230VAC, 9VDC power supply, or rechargeable battery

Illuminated LCD screen

It comes with a standard weight of 0.500 kg for calibrating the scale.



**SOEHNLE**  
PROFESSIONAL

CODE: 036-36-039

## Scale Soehnle 7758

Germany Soehnle Weighing Platform with wheels for easy transport.

Specifications

Version with battery, including power adapter

Weight range 200 kg

Weighing per 100gr

Dimensions 900 x 600 x 55 mm

Weight 12 kg

# BATTERIES

Alkaline Power – AA 4pcs  
Energizer® batteries



CODE: 399-90-002

Alkaline Power – AAA 4 pcs  
Energizer® batteries



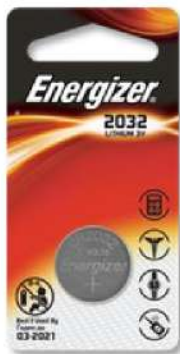
CODE: 399-90-003

Alkaline Power – 9V/522  
Energizer® batteries



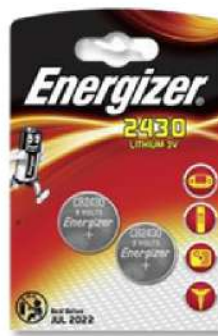
CODE: 399-90-020

Lithium battery  
CR2032 Simba



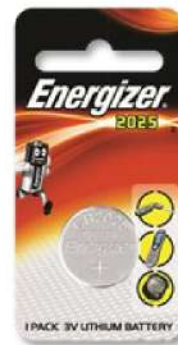
CODE: 399-90-001

Lithium battery  
CR2430 2 pcs.



CODE: 399-90-016

3V Lithium Battery  
CR2025



CODE: 400-90-033

Battery 392/384  
WATCH 1,55V



CODE: 400-90-004

Battery Alkaline 1.5V  
LR44/A76 2 pcs.



CODE: 400-90-015



# HEATING PADS - UNDER BLANKETS



CODE: 324-16-003 (SINGLE 150X80)  
CODE: 324-16-004 (DOUBLE 160X140)



CODE: 324-16-001



CODE: 015-16-001  
CODE: 015-16-007 (WITH COVER)



CODE: 138-16-001 (1,60X2)  
CODE: 138-16-002 (1,30X2)



CODE: 010-30-093

## Termo-Safety Electric Underblanket

Electric underblanket double Termo Safety 300. With 2 separate switches with 3 temperature selection positions and overheating protection. Operating current / power? 230Volt, 50Hz, 2x60Watt.  
SINGLE 150x80 230Volt,50Hz,60Watt Termo Safety 200  
DOUBLE: 160x140 230Volt,50Hz, 2 x 60Watt Termo Safety 300

## Heating Pads Termo-safety 60w-Safety

TERMO-SAFETY 60 electric heater.  
Dimensions : 32X40 cm.  
Power: 220-240V / 50 Hz / 60 Watt.  
Control with 3 positions for temperature selection. With removable washable cover.  
Warranty

## Coronation water heaters

- CORONATION water heaters 2 liters elastic with ridges in various colors (Red-Blue-Green). Dimensions: 28 cm x 20cm
- CORONATION 2 liter water coolers with covers in various colors (Blue-Green-Pink-Purple-Orange)). Dimensions: 28 cm x 20cm

## Isothermal Blanket

The Isothermal first aid blanket is used to protect against excessive heat or cold. It is made of steam-treated aluminum and coated with MPE sheet which insulates and reflects body heat perfectly. It is an essential tool in providing first aid to injured patients and burn victims.

### Specifications

Excellent efficiency in maintaining body temperature. Waterproof and windproof, it can be used as a survival blanket. Double sided gold and silver, to trap or remove heat Dimensions? 200 x 160 cm (Adult) and 200 x 130 cm Lightweight and packable with minimal bulk

## Thermo Underpad 30x40

Thermo Underpad 30x40 made of PCM for cool relief

# BODY THERMOMETERS

## Thermometer digital waterproof Safety A.T./G

Digital body thermometer with sound and waterproof Safety AT/G head  
Measurement range ; 32.0°C-42.9°C  
Accuracy  $\pm 0.1$  °C, 35.5 °C-42.0 °C /  $\pm 0.2$  °C below 35.5 °C or above 42.0 °C at a constant room temperature of 25 °C  
Screen ; Liquid crystal display, 3 ½ digits  
This digital thermometer has been manufactured according to the EN12470-3:2000 standard, ASTM conforms to the requirements of IEC 60601-1:1988+A1+A2, IEC 60601-1-2:2001.



CODE: 252-14-004

## Thermometer Clinical (Medical) without Mercury SAFETY A.T./G

Body thermometer ecological, free of mercury with the unique special case for easy and safe zeroing of the reading  
Indication within 3 minutes Quick zeroing within 5 seconds (Special cap for easy and safe zeroing of the indication)  
Type : Mercury-free thermometer with shaking system.  
Measuring range : 35°C – 42.0°C  
Accuracy : +0.10°C, -0.10°C  
Lowest Rating Value : 0.1°C  
Liquid : mixture of Gallium, Indium and Tin  
The product is compliant with EN12470-1:2000-A1:2009, Clinical thermometers



CODE: 087-14-006

## Romed mercury free thermometer

Eco-friendly, mercury-free Romed Dutch body thermometer with the unique special case for easy and safe zeroing of the reading  
Indication within 3 minutes Quick zeroing within 5 seconds (Special cap for easy and safe zeroing of the indication)  
Type : Mercury-free thermometer with shaking system.  
Measuring range : 35°C – 42.0°C  
Accuracy : +0.10°C, -0.10°C  
Lowest Rating Value : 0.1°C  
Liquid : mixture of Gallium, Indium and Tin



CODE: 010-14-006

## YODA 001 Infrared Forehead Thermometer

The YODA Digital Thermometer is equipped with the latest medical infrared technology and has been clinically tested for accuracy and reliability. With the push of a button, it activates and instantly provides accurate body temperature.



CODE: 631-14-001

## Health Infrared Thermometer

The iHealth PT2L and PT3 Infrared Thermometer measures the temperature of the whole family hygienically, painlessly and with great accuracy. iHealth is a medical device. The readings taken are not synchronized with the iHealth MyVital app. It works through infrared technology



CODE: 374-14-002 PT2L CODE: 374-14-001 PT3

# ROOM THERMOMETERS

Room thermometer  
Medium Wooden 101079  
Moller GERMANY



CODE: 014-14-079

Room thermometer  
Large Wooden 101082  
Moller GERMANY



CODE: 014-14-082

Room thermometer  
large wooden 101126  
Moller GERMANY



CODE: 014-14-126

Room thermometer  
Child CAT-1 Cat  
SAFETY



CODE: 210-14-097

Room thermometer  
Children's LEO-2 Leo  
SAFETY



CODE: 210-14-098

Thermometer  
Children's area  
Moller GERMANY



CODE: 014-14-074 (101074 RED)  
CODE: 014-14-075 (101075 BLUE)

# BATHROOM THERMOMETERS

Moller Bath Fish Thermometer  
GERMANY



CODE: 014-14-547 (WHITE)  
CODE: 014-14-548 (BLUE)  
CODE: 014-14-549 (PINK)

Dolphin thermometer  
Bathroom A-524 SAFETY A.T./G



CODE: 210-14-524



# FRIDGE-FREEZER THERMOMETERS DIGITAL

## Refrigerator thermometer

GERMANY Moller refrigerator and freezer thermometer 04860

The thermometer for freezer and refrigerator 104860 is made of plastic, weighs only 15gr and has a measurement range from -30 ° C to + 40 °

(SMALL) Code; 014-14-840 (104840)

Dimensions; 153 x 24 mm

Weight; 15 g

Measurement Range -40°C ~ +40°C

Construction material; White plastic

(LARGE) Code; 014-14-401 (104401)

Dimensions; 210 x 20mm

Weight; 25 g

Measurement Range? -50°C ~ +50°C

Construction material; White plastic



CODE: 014-14-860  
(SMALL 104860)

CODE: 014-14-601  
(LARGE 104601)

## Digital Fridge and Freezer Thermometer 105242

Indoor and Outdoor Digital Thermometer 105242.

• Maintenance Temperature Range?: -20°C ~ +70°C

• Freezing temperature range: -50°C ~ +70°C

• Accuracy: +/- 1°C

• Rating: 0,1°C

• Maximum - Minimum temperature,

• Temperature alarm when temperature is out of range

• Battery included (1x 1.5V LR44)

Compact and accurate, this fridge and freezer thermometer provides temperature readings. It is easy to handle, water resistant and simple to operate



CODE: 014-14-242 (105242)

## Thermometer Digital 105414

Digital Thermometer with magnet, widely used in haute cuisine, confectionery, laboratories. Minimum Temperature -50c and maximum +300c Standby / Test Mode

With magnet and with high and low temperature alarm

Measuring range: -50 ° C ~ + 300 ° C

Maximum-minimum temperature

External stainless steel sensor with cable length 60 cm Weight: 60g

Normal temperature detection time: 1 second

Size: 90 x 38 mm



CODE: 014-14-414

## Thermometer Digital Indoor and Outdoor 105013

Indoor and Outdoor Digital Thermometer 105013.

Indoor temperature measurement range: -10°C ~ +50°C Range

external temperature measurement: -50°C ~ +70°C

Maximum - minimum temperature function - °C/°F .

Battery included.

Size: 100 x 55 mm



CODE: 014-14-013

## Thermometer MIN/MAX Digital 105057

Digital thermometer 105057 with minimum and maximum temperature measurement on the 2 large columns and digital numerical display on the bottom, this thermometer is useful for indoor and outdoor measurements.

It is water resistant and measures from -25°C to +70°C

Size: 224 x 90 mm



CODE: 014-14-481

# VARIOUS THERMOMETERS



CODE: 014-14-223

## Thermometer Hygrometer Digital MIN/MAX 306126

Digital thermometer, hygrometer for indoor and outdoor measurements.

It has a 2 meter cable with a rod sensor and has 4 selection buttons: space selection counter, reset button, Maximum / minimum temperature recording

Reset button

Indoor/outdoor selection button

Construction material: plastic

Dimensions: 75 x 97 x 19 mm

Weight: 106 g

Measuring range: -10°C ~ +50°C indoor, -50°C ~ +70°C outdoor,

Measuring range: indoor humidity (20% ~ 99% RH) 20% ~ 99% RH



CODE: 014-14- 000

## Thermometer Salt meter 18cm 106772

Salt meter 106772, 17.5 cm glass for measuring brine accurately.

Measuring Range 0-25% 1.0° gradient



CODE: 014-14-712

## Emulsion milkmeter 106712

Emulsion thermometer, German made, suitable for measurements during milk boiling in industries.

It can be used for temperature measurements and other liquids.

Made of glass and plastic, it has a length of 28cm, a weight of 55gr and a measurement range of 0°C ~ +100°C



CODE: 023-14-051

## Pese Potasse 0\_50 meter Thermometer

Glass Potometer with Graduation 0-50 Pese LTessive. Instrument for measuring potash solution. Instrument for measuring potash solution.

Rating: 1

Calibration: 15°C

Length: 170mm

Packing: Plastic protective case

Origin: France

\*We have a wide variety of thermometers, upon order from the manufacturer's catalog.

# PERSONAL HYGIENE ITEMS

## Romed Aqua Caps Bathing Cap

Romed Holland bathing cap, pre-soaked with shampoo, individually wrapped.  
Product materials: Molton non woven + EVA  
Composition: Molton: Viscose: 50%, polyester: 50%,  
EVA: (ethylene-vinyl acetate copo)  
Product size: 52cm, 180gsm molton +0.1mm EVA thickness, Product use: Hair cleaning without water Use of the product: Hair cleaning without water



CODE: 010-30-018

## Romed Aloe Vera wipes

Romed Dutch wet patient wipes, with Aloe Vera, 64 pcs in distribution package,  
Product Material: Spunlace nonwoven Composition: Viscose: 35%, polyester: 65%, EVA (ethylene-vinyl acetate copo).  
Product size: 23X33cm, 40gsm  
Product use: clean your face and any part of your body without water.



CODE: 010-30-017

## Romed Disposable Wash Glove

Romed Holland wash gloves, pre-soaked, disposable, for cleaning your body without water. 8 pcs per package. Romed aqua hands are soft and moisturizing gloves used for personal care. The gloves can be heated in the microwave before use (30 seconds at 700 Watt). Aqua Hands wet gloves replace soap and water. Very easy to use in hospitals and home care. The glove can be used for any part of the body.



CODE: 010-30-016

## Romed Glove-towel with soap

Disposable dry soap washing gloves from Romed of the Netherlands. Gloves should be moistened with a few drops of water before use.  
Components: sodium laureth sulfate 60%, water 31.6%, sodium chloride 4.8%, cocamidopropyl betaine 2%, cocamide 1.5%, benzyl alcohol, methylchloroisothiazolinone, methylisothiazolinone 0.0015%, citric acid 0.05%, ci42090 0.05%.  
Size: 17,2 x 24,2 cm.  
Packing: 20 pcs. per package.



CODE: 010-30-096



## PERSONAL HYGIENE ITEMS

Oxygen 1lt



CODE: 199-08-011

Oxygen 250ml



CODE: 555-08-001

Sanifil Hand Cleaner  
250 ml



CODE: 257-08-112

Alcoholic Lotion



CODE: 407-30-021 (95th 250ml)  
CODE: 407-30-030 (70th 410ml)  
CODE: 407-30-048 (70o 250ml)  
CODE: 407-30-022 (95th 410ml)

Chamomile Antiseptic Gel  
500ml



CODE: 604-99-550

Chamomile Antiseptic Gel  
1000ml



CODE: 604-99-101

Chamomile Antiseptic Gel  
4lt



CODE: 604-99-440

Antiseptic Liquid Protect Liquid  
4lt



CODE: 398-08-009

Disinfectant Spray Alcohol  
rumed 500ml



CODE: 010-08-002

Disinfectant Foam  
Cleansing Romed 500ml



CODE: 010-08-003

Cleaning wipes  
tools Antibacterial



CODE: 010-30-087

# PHARMACY ITEMS



Medicine Pill Cutter  
Romed Holland C-480



CODE: 010-34-002

Pill Pulverize and Cutter  
Holland Romed Pills



CODE: 010-34-004

Pill Cutter



CODE: 679-23-003

Pill Pulverize and Cutter & Case



CODE: 679-23-004

Pill Case 4 Positions



CODE:288-30-016

Pill Case  
Daily 14 Positions



CODE: 288-30-016

Romed medication dispensers,  
week 4 Positions



CODE: 010-23-100

Pill Case 4 Positions



CODE: 679-23-001

Weekly Pill Box



CODE: 679-23-002

Biotap earplugs  
Pu foam 4pcs.



CODE: 214-30-007

Biotap earplugs waxes with  
Cotton cover 6 pcs.



CODE: 214-30-004

Silicone earplugs  
Biotap 6 pcs.



CODE: 214-30-005

CODE: 214-30-006

Box for artificial teeth



CODE: 153-21-001

# PHARMACY ITEMS

## BATHING COVER FOR UPPER ARMS

Bathing Cover Adult Long Arm Protector  
FS 2171 660x440mm



CODE: 153-23-171

Bathing Cover Adult Hand  
FS 2174 360x230mm



CODE: 153-23-174

Bathing Cover Adult Short Arm  
FS 2170 550x260mm



CODE: 153-23-170

Bathing Cover Teenage Arm  
FS 2180 530x230mm



CODE: 153-23-180



Finger Gloves



CODE: 010-30-001 (SMALL)  
CODE: 010-30-002 (MEDIUM)  
CODE: 010-30-003 (LARGE)

## BATHING COVER FOR FOOT

Bathing Cover Adult Foot  
FS 2172 310x360mm



CODE: 153-23-172

Bathing Cover Adult Short Leg  
FS 2173 640x410mm



CODE: 153-23-173

Bathing Cover Adult Long Leg  
FS 2175 1080x510mm



CODE: 153-23-175

Bathing Cover Adult Knee  
FS 2178 500x380mm



CODE: 153-23-178

Bathing Cover Kids Knee  
FS 2179 400x280mm



CODE: 153-23-179

Bathing Cover Teenage Leg  
FS 2181 460x350mm



CODE: 153-23-181

Bathing Cover Kids Leg  
FS 2182 260x300mm



CODE: 153-23-182



# PHARMACY ITEMS

## Portable aspiration device Suck Venom

Suck Venom portable device for sucking venom from stings and bites. A quick and simple method where it easily removes and limits the spread of venom in case of spider and snake bites or bee, wasp, scorpion and dragonfly stings. The package includes:

- Instructions for use
- Vacuum pump
- 2 different sized tips for small or large bites
- 1 hemostatic bandage
- 2 wipes with Iodine 10%
- 2 alcohol wipes with disinfectant and antiseptic action



CODE: 153-30-001

## Mouth to mouth Ventoairways polybag

Kiss of Life Ventoairways polybag. Disposable mouth-to-mouth respirator with polycarbonate one-way valve and non-toxic PVC protective sheet to avoid any direct contact between patient and correct.



CODE: 286-23-001

## Mouth to Mouth Kiss of Life Mask - Keychain FS 102B

Kiss of Life-Keychain Fs102B Artificial respiration mask CPR or otherwise "Kiss of life" with key chain is proven to be the easiest to use and most economical means of protection, to avoid direct contact with the patient during cardiopulmonary resuscitation (CPR). Its translucent construction allows the operator to visually check the patient for discharge or bleeding. The small size of the Life Key allows it to be carried at all times, as a key ring, in the pocket or in first aid bags.

Technical Characteristics

- Plastic non-return protection valve
  - Translucent construction that allows monitoring of the patient's condition
  - Absolute protection of the lighter from blood, saliva and secretions
  - Suitable for use in adults and children
- Small volume and weight, ideal for constant carrying in the bag or as a key ring



CODE: 153-23-019

## Ice Spray 200ml

Cooling Spray is used to relieve pain caused by injuries, sprains, swellings or sprains. Its anesthetic effect, caused by the cooling of the injured area, quickly allows the injured person to return to his usual or sporting activity. Components: Butane Gas Isobutane Propane Aroma



CODE: 168-08-001

## Ice Pack 85 Soft

- 1) Ice pack Ice Pack 85 Soft
- 2) Instant Ice (Polar Ice) Non-Woven Fabric Bag Rays Italy



1)CODE: 393-16-004

## Instant Polar Ice



2)CODE: 257-08-003

## PHARMACY ITEMS



CODE: 015-16-009

### Air chusions synthetic Large

CORONATION reclining coils made of synthetic material (not latex) 45 cm.

Colors: Pink - Green - Yellow - Red - Blue

Specifications:

- Odorless hygienic material.
- No rubber substitutes
- It does not cause allergies
- It provides comfort and softness
- Support
- It can be easily cleaned.
- Design that lasts.
- Available in various colors



CODE: 153-23-016

### First Aid Bag FS005 with handle hard nylon

First aid bag FS005, with many pockets, dimensions 22.5x17.5x6cm, with handle, empty, made of hard nylon. Handy and easy to carry, you can carry it with you, having a complete First Aid care for your family's needs. Suitable for home and car pharmacy.



CODE: 153-23-022

### First Aid Kit Teambox FS068 Safety A.T./G Red

The first aid box is ideal for use in all workplaces and industrial areas, in hotels, in gyms and sports centers, but also in ships, pleasure boats and cars. The box comes empty and you can choose the contents you want to create the right first aid kit for your space.

Safety AT/G Teambox FS-068

Dimensions 27x22x10

Color White/Red

### Solemed Anats

Ready-made Sole-med insoles from Anats Health Products. Latex insoles, scented with chlorophyll. They eliminate odors.

Available sizes from No.37 to No.45



No 36 067-30-036

No 37 067-30-037

No 38 067-30-038

No 39 067-30-039

No 40 067-30-040

No 41 067-30-041

No 42 067-30-042

No 43 067-30-043

No 44 067-30-044

No 45 067-30-045

**Romed con-500R condoms in bulk**

Latex Romed Netherlands condoms are made of high-strength natural latex rubber, according to international standards and free from aesthetic defects.

Type : Single-sided, smooth surface

Style : Reservoir end

Surface Treatment : They are lubricated with silicone oil

Amount of Lubrication : equal to or less than 400 mg

Colour : Pink

Packing: Pack of 144 pieces



CODE: 010-30-083

**Romed Condoms Aurora 3 pcs.**

Romed Latex Condoms made of pure extremely durable, natural latex, in compliance with international standards, Free from aesthetic defects.

Extra Strong Condoms Review: (100%) electronically Colored (CON-COL)

Packing: Pack of 3 pieces

12 packs of 3 on a counter stand



CODE: 010-30-020

**Romed Condoms Forte 3 pcs.**

Romed Forte condoms in a pack of 3. Extra strong condoms, with greater durability for proper and timely protection.

FORTE – VERY DURABLE (CON-STR) (pack of 3)

Packaging: Pack of 3 pieces

12 packs of 3 on a counter stand



CODE: 010-30-021

**Romed Condoms Fruti 3 pcs.**

Romed condoms with FRUTI flavor and aroma (3 pieces).

Latex condoms made of pure extremely durable, natural latex, in compliance with international standards, free from cosmetic defects.

Inspection: (100%) electronically.

Colour : red, orange and yellow

Packing: Pack of 3 pieces

12 packs of 3 on a counter stand



CODE: 010-30-022

**Romed Condoms Finesse 3 pcs.**

Romed Finesse condoms in a package of 3 pieces.

Extra thin condoms, for more intense pleasure of contact.

Packing: Pack of 3 pieces

12 packs of 3 on a counter stand



CODE: 010-30-023

**Romed Condoms Stimuli 3 pcs.**

Romed Stimuli Condoms with Stripes & Dots

Colour: Natural

Packing: Pack of 3 pieces

12 packs of 3 on a counter stand



CODE: 010-30-024



## PHARMACY ITEMS

### Zanzarstop



### Insect Repellents

- **Insect repellent Zanzarstop Spray**  
Italy's ZANZARSTOP Complete Insect Repellent Series.  
Your natural ally against annoying insects.  
For home & garden.  
Aromatic room spray with essential oils, 100ml.  
No propellants.  
With Fragrance: Mint, Lavender, Eucalyptus, Orange-Cinnamon
- **Zanzarstop Space Sticks**  
Room fragrances, with bamboo sticks and essential oils, 100ml.  
For home & garden.  
With Fragrance: Mint, Lavender, Eucalyptus, Orange-Cinnamon

SPRAY ORANGE-CINNAMON	336-80-100
SPRAY GREEN MINT	336-80-101
SPRAY VIOLET LAVENDER	336-80-102
SPRAY BLUE EUCALYPTUS	336-80-103
SPACE RODSORANGE - CINNAMON	336-80-200
STICKS MINT SPACE	336-80-201
LAVENDER SPACE STICKS	336-80-202
EUCALYPTUS SPACE RODS	336-80-203

### Perfumes

Natural perfumes of Italy spray in a package of 12 ml  
Joy Perfumes are divided into 3 categories:  
Men's : VETIVER, SANDALO, TE NERO, AGRUMI DI SICILIA  
Female : SAHARA, ORIENTE, AMBRA, FIOR DI LOTTO  
Unisex: INDIA, BAMBU, TE VERDE, MARINE, VAGNILIA, FIOR DI TALCO, MUSCHIO BIANCO, PATCHOULY

JOY FRAGRANCE 12ml TE VERDE	366-99-001
JOY FRAGRANCE 12ml MUSCHIO BIANCO	366-99-002
JOY FRAGRANCE 12ml VANIGLIA	366-99-003
APΩMA JOY 12ml PATCHOULY	366-99-004
APΩMA JOY 12ml BAMBU	366-99-005
APΩMA JOY 12ml MARINE	366-99-006
APΩMA JOY 12ml FIOR DI TALCO	366-99-007
APΩMA JOY 12ml INDIA	366-99-008
APΩMA JOY 12ml FIOR DI LOTTO	366-99-100
APΩMA JOY 12ml AMBRA	366-99-101
APΩMA JOY 12ml SAHARA	366-99-102
APΩMA JOY 12ml ORIENTE	366-99-103
APΩMA JOY 12ml VETIVER	366-99-200
APΩMA JOY 12ml SANDALO	366-99-201
APΩMA JOY 12ml TE NERO	366-99-202
APΩMA JOY 12ml AGRUMI DI SICILIA	366-99-203

# DISPOSABLE HEALTH & MEDICAL EQUIPMENT



## MEDICAL GLOVES



Health&Safety

**SAFETY A.T./G**

**Romed<sup>®</sup>**





Latex Gloves SAFETY A.T./G	XSMALL	298-12-020
Latex Gloves SAFETY A.T./G	SMALL	298-12-021
Latex Gloves SAFETY A.T./G	MEDIUM	298-12-022
Latex Gloves SAFETY A.T./G	LARGE	298-12-023
Latex Gloves SAFETY A.T./G	XLARGE	298-12-024

## Safety A.T./G Latex Gloves powdered

100 Pack Pieces

Box of 1000

TECHNICAL CHARACTERISTICS :

They are made of high quality natural fresh, elastic latex, with a double coating. Lightly powdered. They are highly resistant to bodily fluids and do not tear easily. They are anti-allergenic. They are anatomically shaped with reinforced cuffs and lapels for easy use. They have a human skin-like feel and a perfect fit on the fingertips. She is ambidextrous. The manufacturing and quality control of the gloves has been done according to the specifications of the European Standards

I.) ASTM D3578, DIRECTIVE 93/42 EEC

II.) EN 455 1-3

III.) AQL 1.5



Vinyl Gloves SAFETY A.T./G	SMALL	389-12-031
Vinyl Gloves SAFETY A.T./G	MEDIUM	389-12-032
Vinyl Gloves SAFETY A.T./G	LARGE	389-12-033
Vinyl Gloves SAFETY A.T./G	XLARGE	389-12-034

## Safety A.T./G Vinyl Gloves powdered

100 Pack Pieces

Box of 1000

TECHNICAL CHARACTERISTICS :

Made from premium quality VINYL. They have an excellent fit. Powdered with vegetable starch raw material. They are thin and have great durability so that they do not affect the touch and do not tear easily. Their elasticity is such that the mobility of the fingers is not hindered. They remain firmly in place during use. They are anti-allergenic. They have lapels for easy use. They are tested for micro-holes.



Nitrile Gloves SAFETY A.T./G	SMALL	298-12-341
Nitrile Gloves SAFETY A.T./G	MEDIUM	298-12-342
Nitrile Gloves SAFETY A.T./G	LARGE	298-12-343
Nitrile Gloves SAFETY A.T./G	XLARGE	298-12-344

## Safety A.T./G Nitrile Gloves powdered free

100 Pack Pieces

Box of 1000

SPECIFICATIONS:

Product : 3.5 Mil Blue Nitrile Exam Gloves, Powder Free

Material : Nitrile

Type : Not sterilized

Glove Design: Ambidextrous and with textured finger surface.

Fruit: Relief

Use: One use

Colour : Blue



## Romed Latex Gloves powder Free

Latex gloves without powder Large by Romed Netherlands  
 100 Pack Pieces  
 Box of 1000  
**SPECIFICATIONS:**  
 Natural Rubber (96.5 – 97%) Sulfur, ZDEC, ZnO, Sodium Salt,  
 Potassium Hydroxide, Calcium Nitrate, Antioxidant  
 Quality level: AQL 1.5  
 Stamina: ASTM D3578 28 N mm -2



Latex Gloves Romed Powder Free SMALL	010-12-071
Latex Gloves Romed Powder Free MEDIUM	010-12-072
Latex Gloves Romed Powder Free LARGE	010-12-073
Latex Gloves Romed Powder Free XLARGE	010-12-074

## Romed Gloves Surgical Sterile powdered

Gloves surgically sterile per pair Romed Netherlands  
 Pack Pieces 50 Pairs  
 Box 400 Pairs  
**SPECIFICATIONS:**  
 Natural Rubber (96.5 – 97%) Sulfur, ZDEC, ZnO, Sodium Salt,  
 Potassium Hydroxide, Calcium Nitrate, Antioxidant  
 Powder internal USP absorbable cornmeal powder  
 Powder amount 15 mg/dm<sup>2</sup>  
 Quality level: AQL 1.5  
 Stamina: ASTM D3578 28 N mm -2  
 Sterilization Gamma Radiation  
 Sterilization power 5 years



Gloves Surgical Sterile Powdered No 6,5	010-12-001
Gloves Surgical Sterile Powdered No 7	010-12-002
Gloves Surgical Sterile Powdered No 7,5	010-12-003
Gloves Surgical Sterile Powdered No 8	010-12-004
Gloves Surgical Sterile Powdered No 8,5	010-12-005

## Romed Gloves Surgical Sterile Powder Free

Box of 250  
**TECHNICAL CHARACTERISTICS :**  
 Light yellow in color  
 Free of dust, dirt, oil stains and other foreign particles  
 Anatomically shaped  
 Small rough surface in palm area  
 Beaded cuff  
 Material: Centrifuged Natural Rubber Latex (96.5 - 97%)



Gloves Surgical Sterile Powder Free No 6,5	010-12-016
Gloves Surgical Sterile Powder Free No 7	010-12-017
Gloves Surgical Sterile Powder Free No 7,5	010-12-018
Gloves Surgical Sterile Powder Free No 8	010-12-019
Gloves Surgical Sterile Powder Free No 8,5	010-12-020



CODE: 389-12-040

## Safety A.T./G Gloves Disposable HDPE Clear

Disposable Gloves Hdpe Transparent Safety 0.6G  
100 Pack Pieces  
Box of 10,000  
SPECIFICATIONS:

They are very thin and durable so that they do not affect the user's touch. Their elasticity is such that the mobility of the fingers is not hindered. They are made of high quality polyethylene. They stay firmly in place during use. They are tested for small holes. Their surface is smooth. They are non-allergenic.

She is ambidextrous. The format and design of their packaging is such as to allow individual download by users. During the construction, special care has been taken so that the lip of the gloves opens very easily, and it is also easy to insert the hands into the glove.

Thickness: 0.025 millimeters



CODE: 010-12-051

## Romed Gloves Two Finger Polyethylene

These gynecological gloves are used for gynecological and urological touch examinations as well as orthopedic digital tests. Polyethylene gloves are non-sterile and fit both men and women, thanks to the universal size.

Product Details for Gynecology/Urology Gloves

Gloves with 2 fingers for index and middle fingers

Material: polyethylene

No latex

Not sterilized

Global size

Healthy disposable product

1 package contains 100 gloves

These gloves and many other exam gloves for doctors and medical personnel can be found at our company Anats Health Products.



## Romed Copolymer Gloves Stickerd on a paper

Romed Disposable Sterile Paper Bonded Copolymer Gloves  
100 Pack Pieces  
Box 2400

SPECIFICATIONS:

Material LDPE (Low Density Polyethylene Line)

High transparency, High insulating and mechanical properties or odor of the components.

EVA (EVA copolymer)

White paper 30 g/m<sup>2</sup>

Packing: Per piece on paper

Gloves Copolymer	SMALL	010-12-061
------------------	-------	------------

Gloves Copolymer	MEDIUM	010-12-062
------------------	--------	------------

Gloves Copolymer	LARGE	010-12-063
------------------	-------	------------

## Romed Gloves Industrial reinforced (Neopren)

Pack Pieces 1 (Pair)

Box 50 (Pair)

SPECIFICATIONS:

The neoprene gloves have a double layer of cotton as an inner lining for extra protection in difficult conditions. Great flexibility, new anatomical design and excellent fit. The new diamond shape on the palm increases grip stability when handling oily or wet objects.

Maximum coverage with soft cotton and sweat absorption. Hygienic care ensures freshness and hygiene. Excellent combination of strength and sensitivity.

Applications: Automotive Industries, Oil Companies and Chemical Industries, Industrial Cleaning and Maintenance, Food Industry.



Gloves Neopren SMALL	010-12-101
----------------------	------------

Gloves Neopren MEDIUM	010-12-102
-----------------------	------------

Gloves Neopren LARGE	010-12-103
----------------------	------------

Gloves Neopren XLARGE	010-12-104
-----------------------	------------

## EveryRays Gloves Latex Kitchen

Pack Pieces 1 (Pair)

Box 60 (Pair)

SPECIFICATIONS:

Material: LATEX

Colour : Yellow / Pink Length 30 cm

Cuff: Rolled on the edge, for greater protection against drops and relief.

Palm: Diamond texture on the palm and fingers prevents slipping and ensures excellent grip in wet conditions.

Interior finish: Cotton lining.

Yellow Latex Gloves SMALL	257-12-180
---------------------------	------------

Yellow Latex Gloves MEDIUM	257-12-181
----------------------------	------------

Yellow Latex Gloves LARGE	257-12-182
---------------------------	------------

Yellow Latex Gloves XLARGE	257-12-183
----------------------------	------------

Pink Latex Gloves SMALL SMALL	257-12-190
-------------------------------	------------

Pink Latex Gloves MEDIUM	257-12-191
--------------------------	------------

Pink Latex Gloves LARGE	257-12-192
-------------------------	------------

Pink Latex Gloves XLARGE	257-12-193
--------------------------	------------





# SYRINGES - NEEDLES



## SAFETY A.T./G

### Safety A.T./G Syringes Without Needle



Syringe Without Needle Safety AT/G sterile, single use. Transparent polypropylene, non-toxic and non-pyrogenic. Individual blister packaging. The syringes, SAFETY AT/G are manufactured exclusively by ANATS SA. for their availability on the International, European and Greek market. They are manufactured in accordance with the international and European standards ISO7886-1:1993 Quality Certificate CE no. 0653 and from materials in accordance with the requirements of the European Pharmacopoeia.

Syringe SAFETY A.T./G 1cc X/B LUER	191-11-001	Box 100	Box 800
Syringe SAFETY A.T./G 2,5cc X/B LUER	191-11-002	Box 100	Box 800
Syringe SAFETY A.T./G 5cc X/B LUER	191-11-005	Box 100	Box 800
Syringe SAFETY A.T./G 10cc X/B LUER	191-11-100	Box 100	Box 800
Syringe SAFETY A.T./G 20cc X/B LUER	191-11-200	Box 50	Box 400
Syringe SAFETY A.T./G 60-50cc CATHETER	191-11-500	Box 45	Box 360

## SAFETY A.T./G

### Safety A.T./G Syringes With Needle



Syringe with detachable needle Safety AT/G sterilized with Ethylene Oxide, single use. Transparent polypropylene, non-toxic and non-pyrogenic. AISI 304 stainless steel needle with triple plagiotomy, 3 parts Individual blister pack. The syringes, SAFETY AT/G are manufactured exclusively by ANATS SA. for their availability on the International, European and Greek market. They are manufactured in accordance with the international and European standards ISO7886-1:1993 Quality Certificate CE no. 0653 and from materials in accordance with the requirements of the European Pharmacopoeia.

Syringe SAFETY A.T./G 1cc -- 27g	191-11-027	Box 100	Box 3000
Syringe SAFETY A.T./G 2,5cc -- 21g	191-11-221	Box 100	Box 1600
Syringe SAFETY A.T./G 2,5cc -- 23g	191-11-216	Box 100	Box 1600
Syringe SAFETY A.T./G 5cc -- 21g	191-11-521	Box 100	Box 1200
Syringe SAFETY A.T./G10cc -- 21g	191-11-010	Box 100	Box 800
Syringe SAFETY A.T./G 20cc -- 21g	191-11-020	Box 100	Box 600
Syringe SAFETY A.T./G60cc CATHETER 21gECC	191-11-552	Box 45	Box 360

## Rays Syringes without Needle

Needle-free syringe, InJ/Light® Transparent polypropylene, non-toxic and non-pyrogenic, sterile, disposable. Individual blister pack RAYS Italy.

3 part disposable syringe consisting of:

Medical transparent polypropylene cylinder with black graduation

Medical polyethylene plunger without latex

Ethylene oxide (EtO) sterilization

Syringe In. J. Light (R) without needle 1cc U100	257-11-001	Box	100	Box	800
Syringe In. J. Light (R) without needle 3cc	257-11-002	Box	100	Box	800
Σύριγγα In. J. Light (R) without needle 3cc LUER LOCK	257-11-003	Box	100	Box	800
Σύριγγα In. J. Light (R) without needle 5cc LUER LOCK	257-11-005	Box	100	Box	800
Σύριγγα In. J. Light (R) without needle 5cc	257-11-006	Box	100	Box	800
Σύριγγα In. J. Light (R) without needle 10cc	257-11-100	Box	100	Box	800
Σύριγγα In. J. Light (R) without needle 10cc LUERLOCK	257-11-121	Box	100	Box	800
Σύριγγα In. J. Light (R) without needle 20cc CENTRUM	257-11-230	Box	50	Box	400
Σύριγγα In. J. Light (R) without needle 20cc LUER LOCK	257-11-200	Box	50	Box	400
Σύριγγα In. J. Light (R) without needle 30cc ECC.	257-11-030	Box	50	Box	400
Σύριγγα In. J. Light (R) without needle 30cc LUER LOCK	257-11-031	Box	50	Box	400
Σύριγγα In. J. Light (R) without needle 60cc CATH.	257-11-500	Box	20	Box	240
Σύριγγα In. J. Light (R) without needle 60cc ECC.	257-11-050	Box	25	Box	200
Σύριγγα In. J. Light (R) without needle 60cc LUER LOCK	257-11-550	Box	25	Box	200



## Rays Syringes with Needle

Syringe with detachable needle, InJ/Light® Clear polypropylene, non-toxic and non-pyrogenic, sterile, single use. The syringe is latex free. AISI 304 stainless steel needle with triple plagiotomy. Individual RAYS Italy blister packaging.

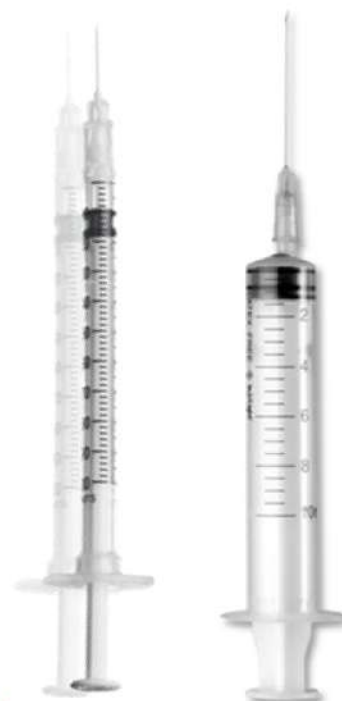
Disposable 3-part syringe consisting of:

Medical transparent polypropylene cylinder with black gradient

Medical Polyethylene Plunger Latex Free

Triple ground stainless steel needle, lubricated with less than  $\leq 0.25$  mg of silicone oil. Medical Polypropylene Needle Cover Ethylene Oxide (EtO) Sterilization

Syringe In. J. Light (R) 1ml → 30g	257-11-300	Box	100	Box	800
Syringe In. J. Light (R) 0.5ml → 30g	257-11-015	Box	100	Box	800
Syringe In. J. Light (R) 1ml → 26g	257-11-026	Box	100	Box	800
Syringe In. J. Light (R) 1ml → 27g	257-11-027	Box	100	Box	800
Syringe In. J. Light (R) 1ml → 30g	257-11-300	Box	100	Box	800
Syringe In. J. Light (R) 2,5cc → 21g	257-11-221	Box	100	Box	800
Syringe In. J. Light (R) 2,5cc → 22g	257-11-222	Box	100	Box	800
Syringe In. J. Light (R) 2,5cc → 23g	257-11-223	Box	100	Box	800
Syringe In. J. Light (R) 5cc → 21g	257-11-521	Box	100	Box	800
Syringe In. J. Light (R) 5cc → 22g	257-11-522	Box	100	Box	800
Syringe In. J. Light (R) 5cc → 23g	257-11-525	Box	100	Box	800
Syringe In. J. Light (R) 10cc → 21g	257-11-010	Box	100	Box	800
Syringe In. J. Light (R) 20cc → 21g	257-11-020	Box	50	Box	400





# DISPOSABLE HEALTH & MEDICAL EQUIPMENT

## Needles Micro Tip/ Ultra

MicroTip/Ultra disposable needle sterile, AISI 304 stainless steel, with triple bevelling, non-toxic and non-pyrogenic, Latex free. Individual blister packaging.  
 Manufacturer: Italy Rays  
 Sterilization method: Ethylene oxide (EtO) sterilization  
 Sterile for: 5 years



Needle (R) Micro Tip/Ultra 18g (1 ½)	1,2mm x 38mm	257-10-018	Box	100	Box	3000
Needle (R) Micro Tip/Ultra 19g (1 ½)	1,1mm x 38mm	257-10-019	Box	100	Box	3000
Needle (R) Micro Tip/Ultra 20g (1 ½)	0,9mm x 38mm	257-10-020	Box	100	Box	3000
Needle (R) Micro Tip/Ultra 21g (1 ½)	0,8mm x 38mm	257-10-021	Box	100	Box	3000
Needle (R) Micro Tip/Ultra 22g (1 ¼)	0,7mm x 32mm	257-10-022	Box	100	Box	3000
Needle (R) Micro Tip/Ultra 23g	1 0,6mm x 25mm	257-10-023	Box	100	Box	3000
Needle (R) Micro Tip/Ultra 25g (5/8)	0,5mm x 16mm	257-10-025	Box	100	Box	3000
Needle (R) Micro Tip/Ultra 26g (1/2)	0,45mm x 13mm	257-10-026	Box	100	Box	3000
Needle (R) Micro Tip/Ultra 27g (1/2)	0,4mm x 13mm	257-10-027	Box	100	Box	3000
Needle (R) Micro Tip/Ultra 29g (1/2)	0,33mm x 13mm	257-10-029	Box	100	Box	3000
Needle (R) Micro Tip/Ultra 30g	0,3mm x 13mm	257-10-030	Box	100	Box	3000
Needle (R) Micro Tip/Ultra 21g Short	0,8mm x 25mm	257-10-121	Box	100	Box	3000

## I.V. Catheter with Injection Port and Wings

Single-use, sterile, Dual-Flow IV catheter with infusion valve and fins. Mediflon. With Special Non-Reflow Valve "MEDIFLON"  
 By EASTERN MEDIKIT LIMITED with CE MARK 0120. Made from web compatible PTFE, which does not expand with body temperature.  
 Sterilization: of ethylene oxide (EtO). Individual blister packaging



Mediflon 18g Dual Flow Catheter	005-13-118	Box 100	Box 1000
Mediflon 20g Dual Flow Catheter	005-13-120	Box 100	Box 1000
Mediflon 22g Dual Flow Catheter	005-13-120	Box 100	Box 1000

## 3 Way Stop Cock



CODE: 005-13-000 (3WAY SIMPLE)  
 CODE: 005-13-005 (3WAY LIPID RESISTANCE)

• EASTERN MEDIKIT LIMITED Three Way Stop Cock Latex Free: the three-way stopcock and its packaging are latex-free.  
 Sterilization: ethylene oxide (EtO)  
 Individual blister packaging  
 Packing: 50 pcs. / 500 pcs. per box  
 • MEDIKIT lipid-resistant three-way faucet  
 Latex Free: the three-way stopcock and its packaging are latex-free.  
 Sterilization: ethylene oxide (EtO)  
 Individual blister packaging  
 Packing: 50 pcs. / 500 pcs. per box

## 3 Way Stop Cock with Extension

Stop Cock 3way with Luer Lock extension and caps . 3-way connectors individually packed and sterile in a blister pack with a 10cm extension.. They ensure perfect fit and tightness.

No latex. Sterilization: of ethylene oxide (EtO). Individual blister packaging  
 • extension 10 cm Packaging: 30 pcs. per box / 180 pcs. per box  
 • extension 50 cm Packaging: 25 pcs. per box / 500 pcs. per box



CODE: 257-13-050 (3WAY 10cm Extension)  
 CODE: 005-13-010 (3WAY 50cm Extension)

## Luer Cap White

Luer-Cap White MEDIKIT  
 No latex  
 Sterilization: ethylene oxide (EtO)  
 Individual blister packaging  
 Packing: 250 pcs. per box / 2,500 pcs. per box



CODE: 005-13-001



## Scalp Vein Sets

Fly/Set blood collection butterfly, RAYS Italy, disposable, sterile, stainless steel AISI 304, with triple plagiotomy, non-toxic, non-pyrogenic. Polypropylene needle cap 30 cm PVC tube. The device is completely latex-free. Sterilization with Ethylene Oxide (ETO). Individual blister packaging. Packing: 100 pcs. per box / 2,000 pcs. per box

Scalp Vein Sets	19g Fly/Set	257-04-019	Box	100	Box	2000
Scalp Vein Sets	20g Fly/Set	257-04-020	Box	100	Box	2000
Scalp Vein Sets	21g Fly/Set	257-04-021	Box	100	Box	2000
Scalp Vein Sets	22g Fly/Set	257-04-022	Box	100	Box	2000
Scalp Vein Sets	23g Fly/Set	257-04-023	Box	100	Box	2000
Scalp Vein Sets	25g Fly/Set	257-04-025	Box	100	Box	2000
Scalp Vein Sets	27g Fly/Set	257-04-027	Box	100	Box	2000
Scalp Vein Sets	29g Fly/Set	257-04-029	Box	100	Box	2000

## Infusion Sets

Serum Device – single/intravenous serum infusion, sterilized with Ethylene Oxide EO, non-toxic and pyrogen-free. They have a perfect finish, are smooth and free from any foreign body. Characteristics

They are made of excellent quality medical grade plastic (PVC), in accordance with the technical specifications of the E.O.F and European and International standards. The piercing tip has a smooth surface and a sharp edge with hardness and taper and has an integrated vent with a microbiological filter to keep the fluid flow unobstructed. The tube of the devices is flexible, transparent, colorless, does not crease and 150 cm long. The Adelberg type flow regulator. The drip chamber is plastic, non-toxic, and is easily compressed, with a 15 micron liquid filter inside and a vent with a lid. It has a flash ball at the point where the drugs are added and after removing the needle (0.6mm) no leakage is observed. The end of the connecting part of the device has a special luer / luer lock connector for comfortable and non-traumatic injection. No latex

## Infusion Sets

Ethylene Oxide EO sterile, vented, shunted, luer lock tip, non-toxic and pyrogen-free intravenous (serum) shunt device. They have a perfect finish, are smooth and free from any foreign body.

Characteristics

They are made of excellent quality medical grade PVC, in accordance with the technical specifications of the E.O.F and European and International standards. Tube Length: 150 cm, Made of PVC, With Y branch and cap for administration of second medicine. No latex.

## Infusion Sets with Flow Regulator

Serum microdroplet device  
Characteristics

Intravenous serum injection device, with precision regulator (barrel) sterilized with Ethylene Oxide (EO), non-toxic and pyrogen-free. Made of excellent quality medical grade plastic (PVC). According to the technical specifications of the E.O.F and the European and International standards. They have a perfect finish, are smooth and free from any foreign body. The flow volume of the solutions is according to the international specifications 5 – 250ml / hr (60 drops, transferred volume  $1g \pm 0.1g$  / minute at an ambient temperature of 20°C). It is achieved by the precision regulator (barrel). The graduation of the precision regulator is perfectly sharp and easy to read starting from the graduation of very small flows. It has a rigid, transparent Y-type shunt for the administration of drugs where also after the removal of the needle (0.6mm) no leakage is observed. Tube Length: 150 cm, Made of PVC, Hollow latex

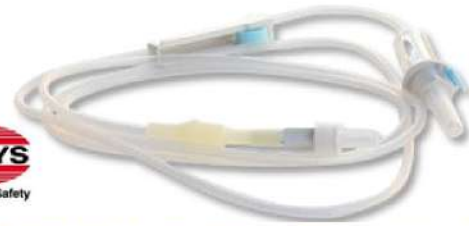
## Blood Transfusion Set

Blood transfusion devices sterilized with Ethylene Oxide (EO), non-toxic and pyrogen-free. Characteristics

ABS needle length 30mm without vent

Drip chamber made of PVC by 9 cm. with 200 micron nylon filter

PVC pipe 150cm. length with outer and inner diameter 4.1x3mm, ABS roller. The puncture point is a Y branch without latex (isoprene). Luer lock PVC connection with polyethylene cap



CODE: 257-04-001 (Def2BLL 1,5M L.L. in bag)  
CODE: 257-04-003 (Def2BLLB L.L. Blister)



CODE: 257-04-004



CODE: 257-04-008



CODE: 257-04-007

## CATHETERS



CODE: 050-13-210 - 220



CODE: 050-13-412 - 418



Romed®

14ch/10ml	010-13-014	Box	10	Box	100
16ch/10ml	010-13-016	Box	10	Box	100
18ch/10ml	010-13-018	Box	10	Box	100
20ch/10ml	010-13-020	Box	10	Box	100
22ch/10ml	010-13-022	Box	10	Box	100



Romed®

2way 14ch	050-13-914	Box	10	Box	10
2way 16ch	050-13-916	Box	10	Box	-
2way 18ch	050-13-918	Box	10	Box	-
2way 20ch	050-13-920	Box	10	Box	-
2way 22ch	050-13-922	Box	10	Box	-
2way 24ch	050-13-924	Box	10	Box	10



Romed®

Latex (MEDIUM) 25mm	010-06-011	Box	50	Box	1000
Latex (LARGE) 30mm	010-06-012	Box	50	Box	1000
Latex (XLARGE) 35mm	010-06-013	Box	50	Box	1000

### Nelaton Catheters

Nelaton plastic catheters , individually packaged, non-traumatic, closed-end, with two side eyes for effective drainage, medical grade PVC sterile disposable 40 cm. they are color coded for immediate identification of sizes

### Levin catheters

Nasogastric feeding catheter , sterile for single use, with a guide wire that facilitates its advancement, made of biocompatible PVC of excellent quality. They have a guide and a protective tip cover, non-traumatic. Lubricated for easy installation with a binder

### Folley 2Way Romed Catheters

Folley 2 way catheter made of latex with silicone coating (siliconized). The lumen of the catheter is wide, while its lateral holes are smooth in order not to injure during catheterization.

The hydrochamber (balloon) is reinforced, inflates symmetrically and has a capacity of 10ml. The 2-way Folley catheter consists of a channel body (one lumen for drainage of urine and one for inflating and deflating the balloon), a circular tip with a balloon to hold it in place, and two drainage holes at the ends of the balloon.

### Silicone Folley Catheters 2Way Romed

Two-way Foley catheter (2way ) made of 100% disposable silicone , sterilized with Ethylene Oxide (EO). It is about 40 cm long). The lumen of the catheter is wide, while its lateral holes are smooth in order not to injure during catheterization. The hydrochamber (balloon) is reinforced, inflates symmetrically and has a capacity of 5-15ml. The 2-way Foley catheter consists of a channel body (one lumen for drainage of urine and one for inflating and deflating the balloon), a circular tip with a balloon to hold it in place, and two drainage holes at the ends of the balloon.

### External Latex Catheters

External Latex Incontinence Catheters

Male external catheter, lightly powdered, single use, sterilized with ethylene oxide, individually packaged. They have an adhesive tape to keep them securely on the penis. In sizes

50 Pack Pieces  
Box of 1000



# UROLOGY

## Urine Bags 2000cc

Obed urine collectors with a capacity of 2 liters.  
It has double safety seams and a clear graduation per 100ml. It also has a special notch in order to easily and safely dispose of urine.  
The valve helps prevent urine reflux.  
Packaging Pieces 25  
Box of 250



CODE: 191-06-001

## Children's Urine Bags

Children's urine collectors 100ml, dimensions 170x170 mm  
Self-adhesive, made of medical (non-toxic), high-quality plastic material so that they do not tear easily. They are graduated per 10ml. Due to its shape it is adaptable to children of both sexes. They have a spacious oval-shaped adjustment notch (on one side), a perfect anatomical fit and excellent sealing.  
Sterilized with Ethylene Oxide (EO).  
100 ml capacity produced in transparent PE with 10 ml volumetric scale of blue color. Due to its shape it is adaptable to babies of both sexes. Overall, the bag is 170mm long and 70mm wide. The hole at the top is a sponge with double-sided adhesive paper for easy placement of the same child.  
Pieces Packing: 1 piece per bag, 100 pieces per carton. Box of 1000 / 2,000



Romed®

CODE: 257-06-003

CODE: 010-06-003

## Urine bags 2lt with valve & cannula with T cannula sterile

Bed urine collectors 2lt with valve & cannula with T cannula sterilized with Ethylene Oxide (EO).  
WITH NON-RETURN VALVE AND CANNULA (UB2LNRV-ST) Urine collector 2000 cc made with transparent PVC graduated from 100 cc to 2000 cc. It incorporates a double plate in the upper part that acts as a valve to prevent the return of liquids and gases. At the bottom of the bag there is a cannula with a safety cap for emptying the urine collector. The 90 cm clear tube is hermetically sealed in the bag and has a tapered connector at the end to accommodate the urinary catheter.  
Packaging Pieces 10  
Box of 250



Romed®

CODE: 010-06-006

## Urine bags 2lt with valve & cannula sterile

Packaging Pieces 10  
Box of 250  
SPECIFICATIONS:  
WITH NON-RETURN VALVE AND CANNULA (UB2LNRV-ST) Urine collector 2000 cc made in transparent PVC with graduated measurement from 100 cc to 2000 cc. It incorporates a double plate in the upper part that acts as a valve to prevent the return of liquids and gases. At the bottom of the bag is a cannula with a safety cap. The transparent tube is hermetically sealed in the bag and fitted with a conical connector at the end adapted for drainage of the patient.



Romed®

CODE: 010-06-004

## Urine leg bags 500ml

Walk-in urine collectors sterile made of medical type PVC opaque particularly resistant according to international standards. The urine collection bag has a capacity of 750ml with a sharp graduation per 100ml. They have a special non-reflux valve and urine drain valve.  
Packaging Pieces 10  
Box of 250



Romed®

CODE: 191-06-002



# PLASTIC DISPOSABLES & BLOOD SAMPLING DISPOSABLES

## Sharps Disposal Containers



CODE: 376-21-002 (2,5-3 lt)  
CODE: 376-21-001 (5,4 lt)

Container for disposal of sharp and infectious objects. Made of a special type of plastic raw material, non-toxic, special type of polypropylene. They provide 100% security with folding safety lids that, after filling the containers with hazardous materials, seal permanently and are impossible to open. All containers have large visible labels with international hazard symbols and instructions for use.

Available in 2 sizes:

a) needle disposal containers 3.2Lt b) needle disposal containers 5.2Lt



CODE: 221-30-002 (40LT RED)  
CODE: 221-30-001 (60LT RED)  
CODE: 221-30-008 (40LT YELLOW)  
CODE: 221-30-006 (60LT YELLOW)

## Infectious Box

Infectious Waste Boxes 40 ksi 60 Liters, disposable, Cardboard Box 60 lt. collection of solid, infectious hospital materials with integrated plastic hygiene bag and thermoplastic closure of international standards. for its sealing. Hazardous Medical Waste Indicator and international biohazard symbol. Yellow Cardboard Box (intended for sterilization). Red cardboard box (intended for cremation)



CODE: 164-23-006

## Medicine glasses 30ml

Medicine and syrup glasses 30ml, graduated per 5ml, made of polypropylene, unbreakable, packed in series of 100 pieces.



CODE: 024-30-005

## Blood Collection Straps Red

The blood collection strap is made of durable hypoallergenic elastic material and has a durable locking clip. The adjustable blood collection belt is quick to put on with one hand and secures firmly, releasing instantly with the push of the release button.



CODE: 294-15-002

## Blood Collection Strips 100 pcs.

Blood sampling strips, round, self-adhesive, ventilated, hypoallergenic, waterproof and sterile, in a package of 100 pieces.



CODE: 294-15-006

## Blood Collection Strips 25x72mm 100 pcs.

Blood sampling strips, oblong, self-adhesive, ventilated, hypoallergenic, waterproof and sterile, in a package of 100 pieces.

# VARIOUS PLASTICS

## Urine Cups Safety A.T./G

Safety urine cups sterilized 100ml in a package of 40 pieces and 100 pieces. It is made of medical grade non-toxic unbreakable high strength polypropylene plastic. Translucent -matte and red screw cap, with visible embossed volumetric marking per 20ml. The cap is screwed on, providing absolute safety when transporting urine. The container is individually packed in cellophane packaging in a cardboard box.



CODE: 164-23-003 (40 pieces)  
CODE: 164-23-009 (100 pieces sterile 100ml)

## Urine Cups (Bulk) C Safety A.T./G

Urine cups Safety Bulk, sterile 100ml in a package of 400 pieces. It is made of medical grade non-toxic unbreakable high strength polypropylene plastic. Translucent -matte and red screw cap, with visible embossed volumetric marking per 20ml. The cap is screwed on, providing absolute safety when transporting urine. The container is individually wrapped in cellophane.



CODE: 164-23-007

## Bed Pan Plastic

Bed pan plastic for home and hospital nursing. It is a device for collecting stools that can be used by patients who are either bedridden or self-sufficient and are unable to use toilet facilities. It is made of plastic, with an anatomical handgrip, and can support a weight of up to 140 kg. After each use it is advisable to carefully wash the device with neutral soap and water and to sanitise. Can be ETO autoclave or cold sterilised.



CODE: 040-23-004

## Urinal for Men Plastic

Plastic male urine container with safety lid.



CODE: 040-23-005

## 24-hour measuring container 2500ml

24-hour urine container 2L for collecting urine for examination. It has an ergonomic handle and graduation per 100ml, while it is made of hard plastic (polyethylene).



CODE: 044-06-007

## Plastic Ointment Jars

Plastic ointment jars 25cc to 500cc with milky stopper and seal.

Ointment Jars of 10cc	040-23-029	Box 100	Box 2000
Ointment Jars of 25cc	040-23-012	Box 36	Box 648
Ointment Jars of 50cc	040-23-013	Box 24	Box 432
Ointment Jars of 100cc	040-23-014	Box 24	Box 288
Ointment Jars of 200cc	040-23-015	Box 24	Box 144
Ointment Jars of 500cc	040-23-030	Box 1	Box 112



## Plastic bottles

Plastic bottles with cap.

Plastic bottles	50cc	040-23-007	Box 50	Box 2000
Plastic bottles	100cc	040-23-008	Box 50	Box 1000
Plastic bottles	200cc	040-23-009	Box 50	Box 500
Plastic bottles	500cc	040-23-010	Box 50	Box 200
Plastic bottles	1000cc	040-23-011	Box 1	Box 100
Plastic bottles	20cc	040-23-025	Box 50	Box 5000
Plastic bottles	25cc	040-23-031	Box 100	Box 3000



# PAPER PRODUCTS & BAGS

## Disposable Examination Rolls



Paper examination roll with plastic lining to cover examination bed. The product is made of tissue paper 100% chemical pulp 21g/m<sup>2</sup> and polyethylene film of 15 to 18 m, packed in a roll. The laminated medical roll can be perforated every 40 cm for easy cutting to the appropriate length.

Paper towels Plasticized 50cmx50m	423-30-050	Box 1	Box 12
Paper towels Plasticized 58cmx50m	423-30-060	Box 1	Box 12
Paper towels Plasticized 70cmx50m	423-30-070	Box 1	Box 12
Examination Roll Double Sheet 50cm x 50m Corrugated	423-30-004	Box 12	Box -
Non woven sheets	423-30-058	Box 1	Box 12

## Paper sheets



Absorbent paper sheets, made from recycled pulp. They are soft and durable to use, in successive sheets measuring approximately 40cm x 60cm.

Papper Sheets AA 5kg	277-30-037	Box 1	Box 4
Papper Sheets 5kg	277-30-012	Box 1	Box 4
Papper Sheets AA 300kg	277-30-045	Box 1	Box 25

## Hand towel Zig-Zag White



CODE: 331-30-025

## Hand towel 33cm 4kg Smooth

## Cotton Roll 1 kg



CODE: 331-30-046 CODE: 257-15-040

Cotton roll 1kg Rays 100% Hydrophilic Cotton roll category "GOLD", according to the official pharmacopoeia. Not sterilized. Roll in sealed bag. Open-close. Class I Medical Device Dir. 93/42/EOK Rays of Italy.

## Cotton White 70g and 100g



CODE: 331-30-010 CODE: 331-30-052

- Cotton 70 gr and 100gr. White Zig-Zag
- It is produced from 100% hydrophilic medicated cotton.
  - White, soft, well carded, composed of long fibers, easily unrolled and cut.
  - Suitable for medical as well as cosmetic use.
  - It meets the specifications of the Greek Pharmacopoeia and bears the CE mark.

## Bags for dead



CODE: 010-30-099 CODE: 010-30-098

Holland Romed Dead Bags, packed per piece in a bag.. Color white. Zipper and handles white



# PROTECTIVE PRODUCTS

## Romed Bocap-W Caps White

Surgical Caps Romed NETHERLANDS non woven Surgical head caps with elastic around.

Made of very soft "non-wooven" material (non-woven fabric)

They are extremely permeable in large size. They have a diameter when the 20 cm rubber is not stretched. Approximately and with a stretched 50cm rubber band.

PACKAGE OF CAPS IN A BOX OF 250 TEMAX.



CODE: 010-30-004

## Safety visor hat

## Hat Harmonica White

White cap with an elastic cord and a typical accordion shape, which guarantees comfort. Soft and breathable material. Suitable for covering the head, front, ears and hair. It has excellent expansion. The seams are durable. Skin breathing is guaranteed even if used for several hours. Antistatic, odorless, latex free, non-toxic and hypoallergenic for users. Diameter 21", max length cm 53 14g/m 100% polypropylene.

Packing: 100 pieces per bag, 1,000/carton.



CODE: 018-30-008



CODE: 445-30-002

## Transparent Half Face Mask

Transparent Safety half-face mask, multi-purpose, suitable for workers in catering, hotel units, beauty and aesthetics areas, food, supermarkets, etc. Covers the mouth and nose.

the protective half-face shield is transparent and anti-glare, so as to help the worker to communicate more easily with the customer. Protects against the transfer of droplets (saliva) and suspended particles of the mask wearer.



CODE: 601-30-001

## Safety Face Shield

The SAFETY At/g Face Shield is comfortable to wear, while protecting the entry gates of viral particles and reducing the chances of self-contamination by preventing the user from touching their face with their hands.

It is comfortable to wear, it is away from the face at a sufficient distance so that on the one hand it does not blur and on the other hand it allows the parallel use of glasses and/or a breathing mask. .Can be reused and is easily cleaned with a wet cloth.



CODE: 603-30-011

## Safety Glasses S-400

Baymax Grand S400 Series Goggles Clear anti-glare, help protect against the corona. Suitable for all healthcare professionals and other professions.



CODE: 627-30-001

# PROTECTIVE PRODUCTS



CODE: 445-30-008



CODE: 010-30-026



CODE: 445-30-001



CODE: 596-30-001



CODE: 596-35-001



CODE: 602-35-001  
CODE: 602-30-001 (Foot wrap tape)

## Blue sleeves

20 micron Polyethylene SLEEVE,  
2.6g, 40\*20cm, with rubber on both ends, blue, waterproof.  
Packaging of 100 pieces/box: 2000

## Disposable PE shoe covers blue

ROMED NETHERLANDS PE disposable shoe covers blue.  
Size: 15x36CM -4.1g/pc, Thickness: 0,05mm  
PACKING: 100pcs/bag 20bags/carton (2000pcs/carton)

## Disposable CPE Safety shoe covers Blue

Disposable CPE Safety Insoles Blue.  
Size: 15x40CM -3.0g/pc  
PACKING: 100pcs/bag  
20 bags/carton (2000 pcs/carton)

## Shoe Covers for the Dispenser Device

Disposable Blue PE Safety Slippers, ideal for Hotels, catering and food businesses, beauty and health areas.

## Mechanical Dispenser

Automatic Foot Cover Placement Device Automatic Shoe Cover Placement Device. ideal for Hotels, catering and food businesses, areas of aesthetic and health interest.

## Shoe Covering Device

The FLY automatic shoe cover applicator is easy to use, modern in design. It works with a mechanism that is activated by the pressure of the body's weight and does not need electricity.

# PROTECTIVE PRODUCTS

## Aprons White Romed

Romed Holland Polyethylene Aprons . Dimensions: 125cm x 80cm x 0.025mm.  
100% low density polyethylene (sagre)  
Packed per piece in a bag, 1000 pcs. per box.  
Packed per 100 pieces in a bag



CODE: 010-30-084 (INDIVIDUAL PACKAGING)  
CODE: 010-30-085

## Surgical gown Blue

Special SMMS material,  
Waterproof  
Excellent breathability  
No seams  
Reinforced  
It has two pockets on the front  
Blue color with short sleeve  
Adjustable Velcro collar  
Excellent Breathability



CODE: 288-30-002 (SMALL)  
CODE: 288-30-003 (MEDIUM)  
CODE: 288-30-006 (LARGE)

## Surgical gown Blue

Safety Blue Sterile Surgical Suit  
The surgical gown is seamless  
SMMS Construction Material,  
Water Repellent Fabric,  
Hermetically sealed back with overlapping edges



CODE: 445-30-003 (LARGE)  
CODE: 445-30-004 (XLARGE)

## CPE Protective Gown with sterile Waterproof Safety A.T./G

Safety gown Blue Sterile  
CPE, with thumb, 40g, 190 x 120cm, waterproof, blue.  
Package 1 piece  
Ark: 100 piece



CODE: 445-30-012

## Protective Gown White Non Woven

White robe with elastic on the sleeves, ties at the waist and high at the neck 115x140cm.  
This product is designed for use in medical settings to prevent contamination of blood, body fluids, or other patient exudates. It can also be used in non-medical areas such as cleaning work, home maintenance, laboratory and industrial environment for normal protection.  
Packing:  
10 pieces in a bag.  
100 pieces per box.



CODE: 389-30-001



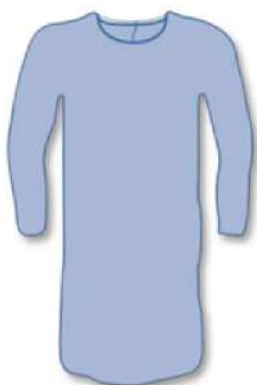
# PROTECTIVE PRODUCTS



CODE: 445-30-005

## Safety A.T./G Guest Gown

VISITOR'S JACKET Safety ATG with elastic cuff.  
Weight / Dimensions: 25g / 115\*140cm. poplar.  
Packed per 10 pieces in a bag, 100 pcs. per box.



CODE: 653-30-001

## Patient Examination Shirt

Opaque Patient examination gown  
SMS material 35gr/m2 •One Size,  
Long sleeve,  
Deep blue color.  
Packed per 10 pieces in a bag, 100 pcs. per box.

## Protective Coveralls type 5/6 & 3/4

LIFEGUARD DUAL PRO  
Protective suit in special Italy Non Woven Rays , no particle release, with antistatic treatment and two SMS inserts back on the back, hooded, double-sided zipper on the front, with zipper cover with adhesive tape, elastic knitted cuffs and elastic ankles, with elastic in the middle.  
Excellent breathability. Silicon free.  
Ensures optimal fit and comfort, Type 5-6, and 3-4.  
AVAILABLE IN ALL SIZES



CODE: 257-30-603



CODE: 257-30-402

## Polypropylene Protective Coverall

Polypropylene Protective Form  
30 gr/m2, equipped with elastic cover, front zipper, elastic cuffs and ankles, with elastic back waist for better body adhesion. Excellent breathability.



CODE: 257-30-501 (MEDIUM )

# PROTECTIVE PRODUCTS

## Face Mask 3PLY

Disposable medical mask Safety AT/G Surgical 3/ply, disposable with high filtration capacity  
 ISO EN 14683:2014 certification  
 Type II BFE≥98%  
 woven  
 Three-layer (3ply) application  
 Without latex and fiberglass the width  
 CE certification  
 Hypoallergenic from non-  
 Easy breathing and flawless  
 Parallel pleats throughout  
 Comfortable and stable tires  
 With mounting plate for correct application to the nose. Approved product for Medical Use



**50 pieces  
with a rubber  
band**

CODE: 644-30-001



**50 pieces  
with destres**

CODE: 445-30-011



**3ply with Rubber 10 pcs.**

CODE: 646-30-010

## Face Mask FFP2 Face Mask individually packaged

FFP2 OLEY and FLASH Face Mask  
 FFP2 protective mask made of non-woven polypropylene, with adjustable blade & comfortable support rubbers. Basic features:

- BFE >95%
- 3D Design
- Comfortable Application
- 5 Layers
- The FFP2 mask is suitable for daily protection of microparticles, droplets, epidemics. It is one of the most suitable masks for protection against the coronavirus COVID-19
- With CE certification. Role model: EN149:2001+A1:2009 In White and other 5 Colors: PINK, BLACK, BLUE, ORANGE, LIGHT GREEN



**10 pieces**

CODE: 646-30-002



**10 pieces**

CODE:646-30-005 (WHITE)  
 CODE: 646-30-004 (BLACK)

## Face Mask FFP3

Folding mask FFP3 AERAMASK  
 Basic features:  
 5 Layers, Adjustable Backrest, Hypoallergenic Composition, Comfortable Support Tires  
 up to 99% filtering efficiency that protects against airborne pathogens  
 Effectively filters pollutants with a minimum size of 0.3 microns & dust PM 2.5. Low inspiratory resistance.  
 Bacterial Filtration Efficiency (BFE): >99%.  
 Particle Filtration Efficiency (PFE) >99%.  
 Standards: CE, EN 149: 2001+A1:2009, CE 0370



CODE: 258-30-003

## Multipurpose Fabric Face Mask with filter

With replaceable active carbon filter and CE and OEKO-TEX certificates. Washable, 5-level filtration of the mask CE and OEKO-TEX certification Reusable, hand or machine washable at 40-60 degrees and multi-purpose. It can be used as a protective agent for partial protection against suspended particles, dust and pollen.



CODE: 597-30-003

# PROTECTIVE PRODUCTS

## Face Mask FFP2 Famex 10 pcs Various Colors



PINK	630-30-002
GREY	630-30-003
BLUE	630-30-004
MAUVE	630-30-100
YELLOW	630-30-101
LIGHT GREEN	630-30-102
RED	630-30-103
LIGHT BLUE	630-30-104
FUCHSIA	630-30-105
GREEN	630-30-109
BLACK	630-30-001
BEIGE	630-30-106
BURGUNDY	630-30-108
WHITE	630-30-107

Famex FFP2 Protection Mask in a pack of 10 pieces in various colors. FFP2, N95 and KN95 masks are acceptable standards that have the same maximum effect against the coronavirus COVID-19

Basic features:

- Elastic support straps.
- Soft nose plate for better fit.
- Foldable to take it with you wherever you are.
- Gentle coating so as not to irritate the skin.
- Packaged per 1 for easy transport.
- Filtration Rate: 95%.
- Number of layers: 5ply.

With CE certification. The FFP2 mask is suitable for daily protection of microparticles, droplets, epidemics. It is one of the most suitable masks for protection against the coronavirus COVID-19.

Available in Adult and Children's sizes in many colors and designs.

## Children's Face Mask FFP2 Famex 10 pcs Various designs



PINK	630-30-200
LIGHT BLUE	630-30-201
PIRATES	630-30-202
POLKA DOT	630-30-203
PRINCESSES	630-30-204
ASTRONAUT	630-30-205
Lila	630-30-206
PINK HEARTS	630-30-207
COWBOYS	630-30-208
UNICORN	630-30-209
FUCHSIA	630-30-210
FOOTBALL	630-30-211
OWL	630-30-212
EMOJI	630-30-213
DARK GREEN	630-30-214
DARK BLUE	630-30-215



# GYNECOLOGICAL SUPPLIES

## Lubricant Free Condoms 144 pcs.

These condoms are made of natural latex rubber, have a smooth surface, natural color, liquid reservoir and do not contain lubricant  
Carefully read the instructions for use in the attached leaflet  
Verify the expiration date.  
Nominal width 52mm  
Unlubricated smooth latex male condoms  
100% electronically tested  
Hermetically sealed  
Packing items: 144



CODE: 277-30-015

## Lubricant Free Ultrasonic Covers

Ultrasound head covers offer the most complete coverage, ensuring safe use of the heads. They eliminate the risk of transmission of HIV and other infectious diseases to patients and nursing staff. They are efficient and economical, because they eliminate the sterilization time of the heads. They effectively protect sensitive equipment. They have excellent ultrasound permeability. They ensure a perfect fit for every type of head.  
Packing items: 72



CODE: 277-30-016

## Cervical Brushes for TEST PAP (100PCS)

Spiral brushes, non-sterile, for obtaining an intracervical smear for pap smear.  
Packing items: 100



CODE: 277-30-005

## Test-PAP sterile brushes

Wooden spatulas, non-sterile for taking an intracervical smear for pap smear.  
Packing items: 100



CODE: 277-30-041

## Cervical Plasters Wooden for TEST PAP (100PCS)

Pink plastic spatulas, non-sterile for taking an intracervical smear for pap smear.  
Packing items: 50



CODE: 277-30-013

## Cervical Spatulas for TEST PAP (100PCS)

Pink plastic spatulas, non-sterile for taking an intracervical smear for pap smear.  
Packing items: 50



CODE: 277-30-004

## Cotton Tips Jumbo 20cm

20cm Jumbo Cottons with wooden rod and cotton top. Non-toxic.  
They are intended for application to patient wounds, anal, vaginal, laryngeal/tracheal sampling by specialized medical personnel. Bag: 50 pcs.



CODE: 277-30-018

# GYNECOLOGICAL SUPPLIES



CODE: 277-30-022

## Cotton Tips 15cm (100PCS)

15cm single cottons with wooden rod and cotton top. Non-toxic. Intended for application to patient wounds, anal, vaginal, laryngeal/tracheal sampling by qualified medical personnel.  
Bag: 100 pcs.



CODE: 277-30-023

## Cotton Tips Sterile (100PCS)

15cm single cottons with wooden rod and cotton top. Non-toxic. Intended for application to patient wounds, anal, vaginal, laryngeal/tracheal sampling by qualified medical personnel.  
Bag: 100 pcs.



CODE: 277-30-006  
(GROUND)

CODE: 277-30-007  
(WHEEL DRIVES)



CODE: 277-30-008  
(WITH MARGINS)

## Microscope Slides

Slides are suitable for a reliable examination and prevention of diseases. These slides show strong adhesion characteristics and cover a wide range of applications. They do not allow the mast to fall better than any other plate. The special silane coating surface treatment creates permanent free polar bonds on the surface, which also through electrostatic attraction ensures cell and tissue adhesion and supports the formation of covalent bonds between the tissue and the glass surface. Tissue and cell substrates adhere quickly and without the use of further adhesives or protein coating agents. Slides are free of streaking and disturbing background staining, such as the blue or red background obtained using hematoxylin and eosin tissue stains on albumin-coated slides, or the brown background obtained during the immunoperoxidase process. During these processes they allow stronger enzyme-induction, without losing the tissue.  
Packing items: 50



CODE: 277-30-002 (SMALL)  
CODE: 277-30-003 (MEDIUM)  
CODE: 277-30-004 (LARGE)

## Vaginal Speculum

Transparent & unbreakable matrosopes with screw, disposable Soft Toch.



CODE: 277-17-003

## Fixing Spray 250ml

The fixing spray is suitable for cytological use. It does not contain components harmful to the ozone and has an isopropanol, polyethylene glycol composition.



CODE: 168-23-001

## Set irrigator

Medical device used to free the last stretch of the intestine from the feces and / or gas, with the introduction of a probe into the rectum and / or in the sigmoid. Its use is for diagnostic purposes, in proximity to a surgery, or just to a temporary difficulty to evacuate due to the presence of fecal impaction obstructive traumatizing, or in the event of constipation or other problems related to defecation. Can also be used in domestic  
Equipped with anal cannula for enemas and vaginal irrigation cannula.

Accessories:

- 1 PVC bag with handle.
- 1 PVC transparent tube.
- 1 faucet with opening lever
- 1 connector.
- 1 short anal cannula.
- 1 long vaginal cannula.

# ULTRASONIC GEL - LUBRICANTS - CREAMS

## Hydrafix cream 250g CREAM-H Romed

Romed skin protection cream Hydrafix 250 gr  
The skin care cream made with selected ingredients absorbs very quickly into the skin. It forms a protective film against water, which supports the natural protective mechanism of the skin, for example, when handling plaster. Always read the label and product information before use. Keep away from children.



CODE: 010-08-001

## Jelly Lubricant KY Sol. 82 gr

Sterile, non-greasy clear, water-soluble, non-irritating gel. It is indicated for electrotherapy and cystoscopy, during examinations with instruments and for additional vaginal lubrication. Packing: 82gr  
Box: 48 pcs.



CODE: 244-17-003

## SoftCare Ultrasound Gel

Completely soluble, does not stain clothes or damage electrical appliances.  
Unique hypoallergenic, antibacterial formula.  
Formaldehyde free.  
Non spermicide  
In transparent color  
Box parts: 50



CODE: 277-30-001

## Gel Aquasound 5lt Basic Blue

The Aquasound ultrasonic gel ensures Perfect acoustics for the range of frequencies used.  
Completely soluble, does not stain clothes or damage electrical appliances.  
Unique hypoallergenic, antibacterial formula.  
Formaldehyde free.  
Non spermicide  
In transparent & Blue color



CODE: 277-19-002



# CONSUMABLES

## Disposable Scalpel Blades



Disposable Sterile Surgical Scalpel made of stainless steel with Romed Holland handle.

Blades with handle: sterile per piece, individually packed in aluminum packaging: 10 pcs in a box, 50 boxes/carton.

Sterilization: gamma radiation

Blades with handle No. 10	010-34-110	Box 10	Box	500
Blades with handle No 11	010-34-111	Box 10	Box	500
Blades with handle No 12	010-34-112	Box 10	Box	500
Blades with handle No 15	010-34-115	Box 10	Box	500
Blades with handle No 18	010-34-118	Box 10	Box	500
Blades with handle No 20	010-34-120	Box 10	Box	500
Blades with handle No 21	010-34-121	Box 10	Box	500
Blades with handle No 22	010-34-122	Box 10	Box	500
Blades with handle No 23	010-34-123	Box 10	Box	500
Blades with handle No 24	010-34-124	Box 10	Box	500

## Surgical Blades



Romed Netherlands disposable sterile surgical blades. Blades: individually packed in aluminum packaging: 100 pcs in a box, 50 boxes/carton.

Sterilization: gamma radiation

Blades No 10	010-34-010	Box 100	Box	5000
Blades No 11	010-34-011	Box 100	Box	5000
Blades No 12	010-34-012	Box 100	Box	5000
Blades No 15	010-34-015	Box 100	Box	5000
Blades No 18	010-34-018	Box 100	Box	5000
Blades No 20	010-34-020	Box 100	Box	5000
Blades No 21	010-34-021	Box 100	Box	5000
Blades No 22	010-34-022	Box 100	Box	5000
Blades No 23	010-34-023	Box 100	Box	5000
Blades No 24	010-34-024	Box 100	Box	5000

## Razor with 2 Blades



CODE: 010-34-125

Razor with 2 Blades ROMED non-sterile with polyethylene plastic handle and Blades from

Stainless Steel (6Cr13) double blade.

Packing: 100 pcs per box, 1200 pcs per carton

## Tongue depressor



CODE: 277-30-032  
(STERILE)

CODE: 010-30-019  
(WOOD)

Non-sterile wooden tongue depressors made of high quality hardwood. Thanks to their extremely careful processing and rounded edges, they guarantee high safety during use. For examination of patients, application of ointment. The sterile version is mainly used in the management of wounds with sterile means, but also in laboratory work where absolutely sterile materials are required, e.g. for coatings etc.

Packing items: 100. In sterile packaging per piece .

# GAUZES - BANDAGE

## Non Sterile Gauzes Swabs

Woven gauze SAFETY A.T./G non-sterile absorbent according to the European specification EN 14079 with 17 threads /cm<sup>2</sup> with cut edges and folded. It can be unfolded several times when use requires a larger size without fraying the threads. It is used for general wound care or as a poultice or sponge in minor operations  
Pack of 100 pieces

Gauze swabs 5X5 8PLY SAFETY A.T./G	418-15-001	Box	100	Box	200
Gauze swabs 10x10 8ply SAFETY A.T./G	418-15-002	Box	100	Box	100
Gauze swabs 10x20 8ply SAFETY A.T./G	418-15-005	Box	100	Box	50
Gauze swabs 10x10 8ply X-RAY SAFETY A.T./G	418-15-022	Box	100	Box	84



## Gauze sterile

Gauze pad SAFETY AT/G Sterile, Folded pads made of 100% natural cotton, excellent quality. Individually packed in a disposable envelope. 10 pieces per carton

Gauze Sterile 15x15cm (5 cm x 5 cm) 12PLY	418-15-030	Box	10	Box	200
Gauze Sterile 15x30cm (7.5x7.5cm) 8PLY	418-15-031	Box	10	Box	200
Gauze Sterile 36x40cm (10x10cm) 16PLY	418-15-032	Box	10	Box	200



## Sterile Adhesive Wound Dressing

Biodress Non Woven Wound Adhesive Pad , Italy Rays. with a lining of soft non-woven material and a core of a special coating that does not adhere to the wound. It has good absorbency and provides impact protection. It is skin-friendly thanks to the hypoallergenic adhesive material. Breathable, light and thin. Radiant, air permeable. For postoperative wound care, but also for the sterile care of microwounds, e.g. when providing first aid. Suitable for patients with sensitive skin

Sterile adhesive 5x7cm	257-15-001	Box	100	Box	1200
Sterile adhesive 8x10cm	257-15-002	Box	50	Box	600
Sterile adhesive 10x10cm	257-15-003	Box	50	Box	600
Sterile adhesive 8x15cm	257-15-004	Box	50	Box	600
Sterile adhesive 10x15cm	257-15-005	Box	50	Box	600
Sterile adhesive 10x20cm	257-15-006	Box	25	Box	450
Sterile adhesive 10x25cm	257-15-007	Box	25	Box	450
Sterile adhesive 10x30cm	257-15-008	Box	25	Box	300



## Paraffin gauzes 10x10cm 36 pcs.

Paraffin Gauze Romed Netherlands sterile 10x10cm. Paraffin gauze is a pad impregnated with paraffin gel. They are made of excellent quality cotton gauze with a thin weave and texture (in order to allow the unhindered circulation of air to the wound), without imperfections and fraying. They are impregnated with thick paraffin gel which is evenly distributed over the entire length and width of the pad. They do not cause allergies or irritation and do not stick to the wound.



CODE: 010-15-001

# BANDAGE



Adhesive Paper Biopap 2,5cmx5m	257-15-011	Box	12	Box	480
Adhesive Paper Biopap 5cmx5m	257-15-013	Box	6	Box	240
Adhesive Paper Biopap 5cmx9,14m	257-15-014	Box	6	Box	240



Adhesive Silk Biosilk 2,5cm x 5m	257-15-021	Box	12	Box	480
Adhesive Silk Biosilk 2,5cmx 9,14m	257-15-022	Box	12	Box	480
Adhesive Silk Biosilk 5cmx 5m	257-15-023	Box	6	Box	240
Adhesive Silk Biosilk 5cmx 9,14m	257-15-024	Box	6	Box	240



Elastic Bandage 6cmx4m	418-15-060	Box	10	Box	400
Elastic Bandage 7cmx4m	418-15-070	Box	10	Box	400
Elastic Bandage 8cmx4m	418-15-080	Box	10	Box	400
Elastic Bandage 10cmx4m	418-15-100	Box	10	Box	240
Elastic Bandage 12cmx4m	418-15-120	Box	10	Box	200
Elastic Bandage 15cmx4m	418-15-150	Box	10	Box	200
Elastic Bandage 20cmx4m	418-15-200	Box	10	Box	120

## Adhesive Paper Tapes

Self-adhesive Biopap fixing tape from Rays Italy, suitable for fixing and stabilizing patches and bandages. Suitable for cases where frequent dressing changes are required.

Characteristics:

- biocompatible,
- Particularly skin-friendly,
- strong paste,
- Leaves no residue when removed,
- It can be cut by hand

## Adhesive Silk Tapes

Biosilk self-adhesive artificial silk bandage is disposable, made of soft breathable silk, suitable for sensitive and irritated skin.

Product features and properties:

Composition 100% Cotton

Color Natural White

Packing:

Roll film with wings and roll cover

Small Package: 6 or 24 pieces/box

Great Package: box

## Elastic Bandage

Elastic, light pressure non-sterile Ideal type bandage, in off-white or white color made of cotton and polyamide, with 70-80% extensibility available with clip fixing.

The product is suitable for all skin types.



# SURGICAL INSTRUMENTS



## SCISSORS

**Scissors 14.5cm  
Straight SS Mayo**



CODE: 010-35-023

---

**Scissors 14 cm Curved  
Surgical Scissors**



CODE: 010-35-040

---

**Scissors 11 cm Curved  
Surgical Scissors**



CODE: 010-35-034

---

**Scissors 18cm  
Metzenbaun Straight**



CODE: 010-35-036

---

**Scissors 18cm  
Metzenbaun Curved**



CODE: 010-35-037

---

**Scissors 17cm  
Mayo Curved**



CODE: 010-35-041

---

**Scissors 14cm  
Metzenbaun Curved**



CODE: 010-35-063

---

\*Our company has an additional variety of surgical instruments, upon request.

## HANDLE FOR BLADES

Handle for blades no. 3



CODE: 010-35-055

---

Handle for blades no. 4



CODE: 010-35-056

---

## NEEDLE HOLDER

Needle holder  
Mathieu 17cm



CODE: 010-35-062

---

Needle holder  
Mayo Hegar 18cm



CODE: 010-35-060

---

Needle holder  
Mathieu 14cm



CODE: 010-35-061

---

Needle holder  
Crile-Wood 15cm



CODE: 010-35-057

---

\*Our company has an additional variety of surgical instruments, upon request.



## FORCEPS

**Forceps Magill  
Child**



CODE: 010-35-013

**Spong Forceps  
Gross-Maier 25cm  
Curved**



CODE: 010-35-020

**Forceps Kocher Curved  
1X2 14cm**



CODE: 010-35-018

**Spong Forceps  
Gross-Maier 25cm  
Straight**



CODE: 010-35-019

**Forceps Tissue Spring-  
Type 1X2 Teeth 14,5cm**



CODE: 010-35-047

**Forceps Sponge  
Holding Straight  
24cm**



CODE: 010-35-021

**Forcpes Magill  
Adult**



CODE: 010-35-014

**Forceps Haemostatic  
Curved 1x2 12,5cm**



CODE: 010-35-006

**Forceps Sponge  
Holding Curved  
24cm**



CODE: 010-35-022

\*Our company has an additional variety of surgical instruments, upon request.

# ORTHOPEDIC & ORTHOPEDIC AIDS



**Manual wheelchair  
Dynamic**



CODE: 010-46-001  
CODE: 010-46-005  
CODE: 010-46-006



**Electric wheelchair**



CODE: 010-45-008

**Wheelchair Gemini Blue with  
large wheels**



CODE: 318-22-026

**Wheelchair Gemini Blue with  
medium wheels**



CODE: 318-22-026

**Transport chair  
Glory**



CODE: 010-46-007

**Indoor Wheelchair III with  
commode**



CODE: 318-22-027



Wheelchair with a large wheel and fixed sides and footrests



CODE: 318-22-028

---

Wheelchair with medium wheel and fixed sides and footrests



CODE: 318-22-029

---

Commode chair



CODE: 010-45-009

---

Wheelchair with small wheel and Commode



CODE: 318-22-030

---

Wheeled Folding Toilet



CODE: 318-22-033

---

Wheeled Walker Rollator Red



CODE: 010-45-002

---

**Adjustable  
Bathtub Bench**



CODE: 318-22-010

---

**Fixed Bathtub Bench**



CODE: 010-45-010

---

**Bath chair without  
backrest**



CODE: 010-45-010

---

**Raised Toilet Seat  
10cm**



CODE: 318-31-006

---

**Raised Toilet Seat  
15cm**



CODE: 318-31-006

---

**Bubble Mattress with  
Electric Air Pump**



CODE: 318-31-012

---

**Folding commode chair**



CODE: 318-22-031

---

**Fixed commode chair**



CODE: 318-22-032

---

**Crutches Aluminium**



CODE: 318-26-026

---

**Crutch Cura**



CODE: 010-46-004

---

**Crutch**



CODE: 318-46-013

---

**Crutch with Fixed Handle**



CODE: 010-46-005

---

**Adjustable Walking Stick with Stand up Base**



CODE: 318-46-014

---

**Black Folding Aluminum Cane**



CODE: 318-46-015

---

**Crutch Grey**



CODE: 318-46-016

---

**Forearm Crutch with Adjustable Handle**



CODE: 318-46-017

---

**Armpit Medium Grey**



CODE: 318-26-027

---

**Walker Foldable Motion**



CODE: 318-26-006

---

**2-level Foldable Walker**



CODE: 318-46-007

---

\*Our company has a variety of orthopedic items, upon request.



SAFETY A.T./G

**ERKA.**

MAC-CHECK ANATS

**Romed**<sup>®</sup>

target<sup>®</sup>

iHealth<sup>™</sup>

**MIR**  
MEDICAL INTERNATIONAL RESEARCH

**SOEHNLE**  
PROFESSIONAL

**ALL TEST**<sup>®</sup>

LUX

**SEJOY**

**ApEXBio**

bioTAP<sup>®</sup>

**MEDIKIT**  
*The better life*

**RAYS**  
Health & Safety

**CA-MI**

**OGCare**<sup>®</sup>

**seca**  
Precision for health

**GIMA**

**3A**  
HEALTH CARE

**CORONATION**  
HOT WATER BOTTLES

**YODA**

BORSAM

**NISSEI**

MULTICAREIN

**3M**  
Littmann<sup>®</sup>  
Stethoscopes

**ZANZARSTOP**

JOY  
eau de parfum

**JOYSBIO**

for.me.sa.

furniture medico sanitarie

**FIM**  
Medical

**ASHA**  
INTERNATIONAL  
Body In Balance

**MEDITECH**

**ARKY**  
AED ACCESSORIES

We provide technical support and spare parts for all our products.

Visit our online pages [www.anats.gr](http://www.anats.gr)

Our company reserves the right to change the designs and specifications of the catalog products without prior notice. To avoid any change, no part of the catalog can be reproduced in any form or by any means electronic or mechanical, including copying or photographing on microfilm, without the written permission of ANATS SA. Company reserves all rights.

The company ANATS S.A. bears no responsibility for any typographical errors.

**anats**  
health products